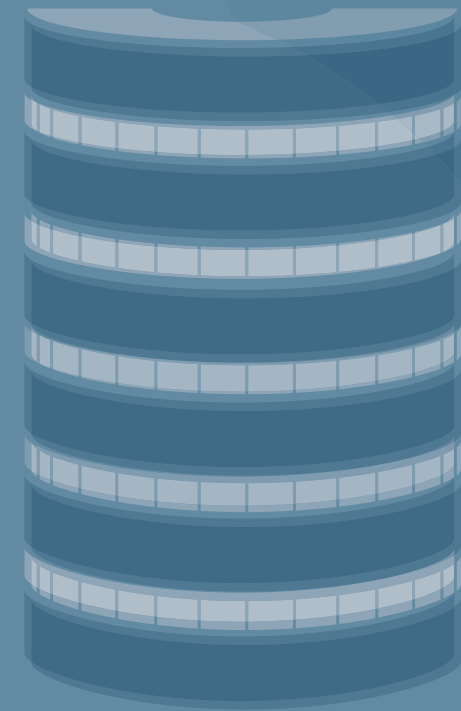


VitrA

VitrA

VitrA



Arkitekt URBAN LIFE

Urban Life
Arkitekt

VitrA

Urban Life / Arkitekt
4-5

Kullanım Alanları / Areas of Use
6-11

Kamusal Binalar ve Merkezler / Public Buildings & Centers

Ticari Alanlar / Commercial Areas

Otomobil Showroomları / Car Dealerships

İşyerleri ve Bankalar / Offices & Banks

Oteller ve Restoranlar / Hotels & Restaurants

Ürünler / Products
12-59

Ararat

Arcadia

Arsemia

Cemento

Dakota

Damask Stone

Elegant

Iris Stone

Kinetic

Loft

Metallica

Porfido Stone

VitrA Tech
60-63

Referanslar / References
60-63

Teknik Bilgiler / Technical Pages
64-67



VitrA Urban Life Arkitekt

VitrA Porselen Karolar, yüzeyleri tanımlar...

Şehir hayatı güzelleşmekle kalmayıp, işlevsellik kazanıyor. VitrA Urban Life serisi porselen karoları havaalanı, alışveriş merkezi, mağaza, restoran, otel, otomobil showroom'u ve iş merkezleri gibi yoğun trafik alanlarına, estetik görünüşleriyle değer katmakla kalmıyorlar, dayanıklılıkları, kaymazlık ve kolay temizlenebilme özellikleri ile fonksiyonel çözümler sunuyorlar.

30x30 cm'den 60x120 cm'e kadar çeşitli ebatlarda ve moda renklerde üretilen Urban Life porselen yer karoları mat, parlak, rölyef ve kaymaz yüzey seçenekleriyle, şehir hayatının hızlı temposunda mekanlara dinamizm ve kalite katıyorlar.

VitrA karolar yalnızca yüzeyleri kaplamaz, onları baştan yaratır.

VitrA Porcelain Tiles. The defining surface.

City life is fast-paced, exciting, demanding and – at its best – breathtakingly beautiful. Designed with that in mind, VitrA's Urban Life Tiles are not just stunning to look at, but make a highly functional statement in the terrain of contemporary living.

Matching eye-catching elegance with hardwearing, slip resistant and easy-to-clean performance, VitrA's Urban Life series provide the finest surfaces for the most demanding, high traffic, high end environments such as airports, cafés, automobile showrooms, shopping malls, museums and galleries. Better yet, aesthetics never need to be compromised for durability as Urban Life tiles are offered in a wide range of sizes from 30x30 cm to 60x120 cm, and a superb choice of colours and textures – including matte, glossy, relief and anti-slip.

VitrA Tiles don't just cover a space. They define it.

VitrA-Feinsteinzeugfliesen. Raumgestaltung mit Format.

Das Leben in der Stadt ist hektisch, aufregend, strapaziös, oft aber auch wunderbar und atemberaubend. All diese Facetten spielten bei der Entwicklung der VitrA-Linie Urban Life eine Rolle, mit dem Ergebnis, dass sich die Fliesen nicht nur in ihrer fantastischen Optik, sondern auch in ihrer Funktion optimal dem anspruchsvollen zeitgenössischen Lebensstil anpassen.

Die Kombination von optisch stilvoller Eleganz und der funktionalen Widerstandsfähigkeit gegen Abrieb gepaart mit hoher Rutschfestigkeit und leichter Reinigungsfähigkeit liefert eine optimale Grundlage für stark frequentierte Räume in exklusiven Umgebungen wie Flughäfen, Cafés, Autohäusern, Einkaufszentren, Museen und Galerien. Und die Urban Life-Fliesen in einer Menge verschiedener Größen (von 30 x 30 bis 60 x 120 cm), Farben und Oberflächen (matt, lappato, strukturiert, rutschfest...) erhältlich sind, steht die Ästhetik nie hinter Haltbarkeit und Robustheit zurück.

VitrA-Fliesen verkleiden nicht nur Flächen – Sie definieren den Raum neu.

Керамическая плитка VitrA. Определяющая поверхность.

Быстрый ритм требовательной городской жизни делает ее захватывающей и, несмотря ни на что, ошеломляюще прекрасной. Дизайнеры не забывают об этом - керамическая плитка Urban Life фирмы VitrA потрясает не только своей красотой, но и высокой функциональностью в современном мире.

Серия Urban Life фирмы VitrA сочетает в себе броскую элегантность и износостойкость, обеспечивает нескользкие, легко очищаемые и привлекательные покрытия для зон с интенсивным движением и широкими функциональными возможностями – аэропортов, кафе, демонстрационных залов автомобильных фирм, торговых пассажей, музеев и галерей. Эстетика прекрасно гармонирует с прочностью: существует широкая гамма размеров керамической плитки Urban Life – от 30x30 см до 60x120 см, богатейший выбор цветов и текстур, включающих матовую, блестящую, рельефную и предупреждающую скольжение отделку.

Керамическая плитка VitrA не просто покрывает поверхности – она определяет их.

Carrelages céramique VitrA. Le revêtement ultime.

Les villes d'aujourd'hui sont trépidantes, exigeantes, passionnantes, mais souvent aussi d'une incroyable beauté. Conçus dans cet esprit, les Carrelages VitrA Urban Life ne se contentent pas d'être remarquablement beaux à regarder, mais ils offrent aussi une solution parfaitement adaptée aux impératifs de la vie moderne.

Associant élégance, esthétique, solidité, efficacité anti-glisser et facilité de nettoyage, la ligne VitrA Urban Life offre des revêtements haut de gamme à destination des lieux de passage intense, où l'exigence de qualité est maximale : aéroports, cafés, showrooms de concessions automobiles, centres commerciaux ou musées et galeries. Mieux encore, les carrelages Urban Life ne sacrifient jamais l'esthétique à la durabilité, puisqu'ils sont disponibles dans un large choix de tailles, du 30x30 cm au 60x120 cm, et dans de nombreuses nuances de couleur et types de texture – y compris mat, brillant, relief et anti-glisser.

Les carrelages VitrA ne se contentent pas d'habiller l'espace. Ils le créent.



*Kamusal Binalar ve Merkezler
Public Buildings @ Centers*

HOTIÇ

*Ticari Alanlar
Commercial Areas*



*Otomobil Showroomları
Car Dealerships*



*İşyerleri ve Bankalar
Offices & Banks*



*Oteller ve Restoranlar
Hotels & Restaurants*



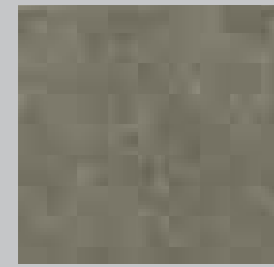
Ararat



EN 14411 Group Bla

Ararat

M 60x120cm / 24"x48" - M 60x60cm / 24"x24" - M 30x60cm / 12"x24" - M 45x45cm / 18"x18" - M 30x30cm / 12"x12"



- Vizon - Mink
- *K844586R Mat - Matt (60x120)
- *K844586 LPR (60x120)
- K816483 Mat - Matt (60x60)
- *K816483R Mat - Matt (60x60)
- K816483 LP (60x60)
- *K816483 LPR (60x60)
- K817264 Hammered (60x60)
- *K817264R Hammered (60x60)
- K812224 Mat - Matt (30x60)
- *K812224R Mat - Matt (30x60)
- K812224 LP (30x60)
- *K812224 LPR (30x60)
- K812320 Hammered (30x60)
- *K812320R Hammered (30x60)
- K812176 Mat - Matt (45x45)
- *K812176R Mat - Matt (45x45)
- K812176 LP (45x45)
- *K812176 LPR (45x45)
- K808171 Hammered (45x45)
- *K808171R Hammered (45x45)
- K854155 Mat - Matt (30x30)
- *K854155R Mat - Matt (30x30)

R9

R9

R10

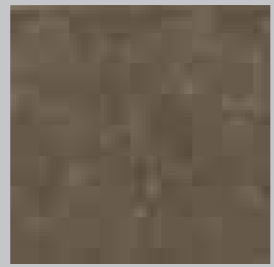
R9

R10

R9

R10

R9



- Moka - Mocha
- *K844590R Mat - Matt (60x120)
- *K844590 LPR (60x120)
- K816505 Mat - Matt (60x60)
- *K816505R Mat - Matt (60x60)
- K816505 LP (60x60)
- *K816505 LPR (60x60)
- K817286 Hammered (60x60)
- *K817286R Hammered (60x60)
- K812235 Mat - Matt (30x60)
- *K812235R Mat - Matt (30x60)
- K812235 LP (30x60)
- *K812235 LPR (30x60)
- K812331 Hammered (30x60)
- *K812331R Hammered (30x60)
- K812180 Mat - Matt (45x45)
- *K812180R Mat - Matt (45x45)
- K812180 LP (45x45)
- *K812180 LPR (45x45)
- K812191 Hammered (45x45)
- *K812191R Hammered (45x45)
- K854166 Mat - Matt (30x30)
- *K854166R Mat - Matt (30x30)

R9

R9

R10

R9

R10

R9

R10

R9



- Bej - Beige
- *K844542R Mat - Matt (60x120)
- *K844542 LPR (60x120)
- K816446 Mat - Matt (60x60)
- *K816446R Mat - Matt (60x60)
- K816446 LP (60x60)
- *K816446 LPR (60x60)
- K817220 Hammered (60x60)
- *K817220R Hammered (60x60)
- K812246 Mat - Matt (30x60)
- *K812246R Mat - Matt (30x60)
- K812246 LP (30x60)
- *K812246 LPR (30x60)
- K812294 Hammered (30x60)
- *K812294R Hammered (30x60)
- K807053 Mat - Matt (45x45)
- *K807053R Mat - Matt (45x45)
- K807053 LP (45x45)
- *K807053 LPR (45x45)
- K807692 Hammered (45x45)
- *K807692R Hammered (45x45)
- K854111 Mat - Matt (30x30)
- *K854111R Mat - Matt (30x30)

R9

R9

R10

R9

R10

R9

R10

R9



- Fildisi - Ivory
- *K844553R Mat - Matt (60x120)
- *K844553 LPR (60x120)
- K816450 Mat - Matt (60x60)
- *K816450R Mat - Matt (60x60)
- K816450 LP (60x60)
- *K816450 LPR (60x60)
- K817231 Hammered (60x60)
- *K817231R Hammered (60x60)
- K812250 Mat - Matt (30x60)
- *K812250R Mat - Matt (30x60)
- K812250 LP (30x60)
- *K812250 LPR (30x60)
- K812305 Hammered (30x60)
- *K812305R Hammered (30x60)
- K807042 Mat - Matt (45x45)
- *K807042R Mat - Matt (45x45)
- K807042 LP (45x45)
- *K807042 LPR (45x45)
- K807725 Hammered (45x45)
- *K807725R Hammered (45x45)
- K854100 Mat - Matt (30x30)
- *K854100R Mat - Matt (30x30)

R9

R9

R10

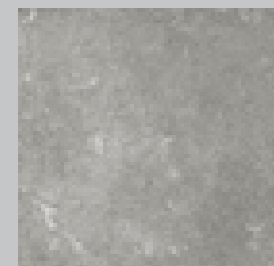
R9

R10

R9

R10

R9



- Gri - Grey
- *K844564R Mat - Matt (60x120)
- *K844564 LPR (60x120)
- K816461 Mat - Matt (60x60)
- *K816461R Mat - Matt (60x60)
- K816461 LP (60x60)
- *K816461 LPR (60x60)
- K817242 Hammered (60x60)
- *K817242R Hammered (60x60)
- K812202 Mat - Matt (30x60)
- *K812202R Mat - Matt (30x60)
- K812202 LP (30x60)
- *K812202 LPR (30x60)
- K812272 Hammered (30x60)
- *K812272R Hammered (30x60)
- K807064 Mat - Matt (45x45)
- *K807064R Mat - Matt (45x45)
- K807064 LP (45x45)
- *K807064 LPR (45x45)
- K80714 Hammered (45x45)
- *K80714R Hammered (45x45)
- K854122 Mat - Matt (30x30)
- *K854122R Mat - Matt (30x30)

R9

R9

R10

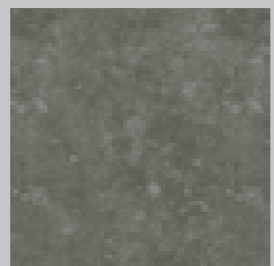
R9

R10

R9

R10

R9



- K. Gri - D. Grey
- *K844096R Mat - Matt (60x120)
- *K844096 LPR (60x120)
- K816494 Mat - Matt (60x60)
- *K816494R Mat - Matt (60x60)
- K816494 LP (60x60)
- *K816494 LPR (60x60)
- K817275 Hammered (60x60)
- *K817275R Hammered (60x60)
- K812213 Mat - Matt (30x60)
- *K812213R Mat - Matt (30x60)
- K812213 LP (30x60)
- *K812213 LPR (30x60)
- K812283 Hammered (30x60)
- *K812283R Hammered (30x60)
- K812165 Mat - Matt (45x45)
- *K812165R Mat - Matt (45x45)
- K812165 LP (45x45)
- *K812165 LPR (45x45)
- K808182 Hammered (45x45)
- *K808182R Hammered (45x45)
- K854133 Mat - Matt (30x30)
- *K854133R Mat - Matt (30x30)

R9

R9

R10

R9

R10

R9

R10

R9



- Siyah - Black
- *K844575R Mat - Matt (60x120)
- *K844575 LPR (60x120)
- K816472 Mat - Matt (60x60)
- *K816472R Mat - Matt (60x60)
- K816472 LP (60x60)
- *K816472 LPR (60x60)
- K817253 Hammered (60x60)
- *K817253R Hammered (60x60)
- K812261 Mat - Matt (30x60)
- *K812261R Mat - Matt (30x60)
- K812261 LP (30x60)
- *K812261 LPR (30x60)
- K812316 Hammered (30x60)
- *K812316R Hammered (30x60)
- K808145 Mat - Matt (45x45)
- *K808145R Mat - Matt (45x45)
- K808145 LP (45x45)
- *K808145 LPR (45x45)
- K807703 Hammered (45x45)
- *K807703R Hammered (45x45)
- K854144 Mat - Matt (30x30)
- *K854144R Mat - Matt (30x30)

R9

R9

R10

R9

R10

R9

R10

R9

*Imm ye kadar derz ile döşenebilir.
M(45x45) Ürünlerin kenarı pahlanmıştır, pahlandıktan sonraki ebat 442x442 mm dir.
M(60x60) Ürünlerin kenarı pahlanmıştır, pahlandıktan sonraki ebat 592x592 mm dir.
M(30x60) Ürünlerin kenarı pahlanmıştır, pahlandıktan sonraki ebat 292x292 mm dir.
M(60x120) ürünlerin kenarı pahlanmıştır, pahlandıktan sonraki ebat 592x112 mm dir.

*It is recommended to use max. 1mm joint for grouting.
M(45x45) The edges are rectified, the final product is size 442x442 mm.
M(60x60) The edges are rectified, the final product is size 592x592 mm.
M(30x60) The edges are rectified, the final product is size 292x292 mm.
M(60x120) The edges are rectified, the final product is size 592x112 mm.

*Es wird empfohlen, max. mit 1mm Fugenschnitt zu verfugen.
M(45x45) Die Kanten sind kalibriert, nach der Kalibrierung der Kanten hat das Produkt das Format 442x442 mm.
M(60x60) Die Kanten sind kalibriert, nach der Kalibrierung der Kanten hat das Produkt das Format 592x592 mm.
M(30x60) Die Kanten sind kalibriert, nach der Kalibrierung der Kanten hat das Produkt das Format 292x292 mm.
M(60x120) Die Kanten sind kalibriert, nach der Kalibrierung der Kanten hat das Produkt das Format 592x112 mm.

*On conseille d'appliquer avec max. 1mm. de joint.
M(45x45) Les bords sont rectifiés, le produit fini est 442x442 mm.
M(60x60) Les bords sont rectifiés, le produit fini est 592x592 mm.
M(30x60) Les bords sont rectifiés, le produit fini est 292x292 mm.
M(60x120) Les bords sont rectifiés, le produit fini est 592x112 mm.

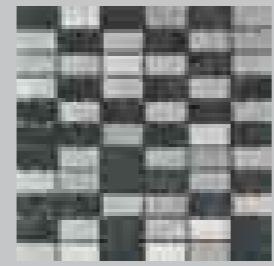
Kalinlik - Thickness= 11mm



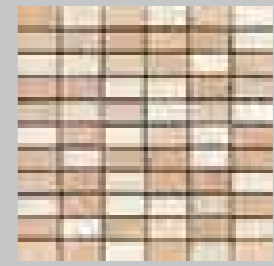
Bordur
30x45 cm / 12"x18"
Gri, Siyah - Grey, Black
K038334



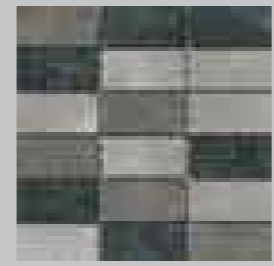
Bordur
30x45 cm / 12"x18"
Bej - Beige
K038345



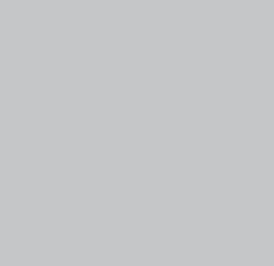
Bordur
2,5x5 cm / 1"x2"
Gri, Siyah - Grey, Black
K035254



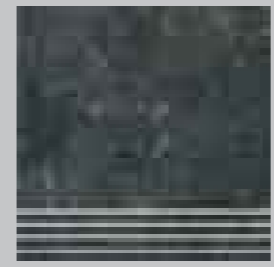
Bordur
2,5x5 cm / 1"x2"
Bej - Beige
K035265



Bordur
5x10 cm / 2"x4"
Gri, Siyah - Grey, Black
K035280



Bordur
5x10 cm / 2"x4"
Bej - Beige
K035604



Basamak - Step tread
45x45 cm / 18"x18"



Süpürgelik - Bullnose skirting
8,5x60 cm / 4"x24"

8,5x45 cm / 4"x18"

- Siyah - Black
- K815142
- K815142 LP
- Fildisi - Ivory
- K815116
- K815116 LP
- Vizon - Mink
- K815131
- K815131 LP
- Gri - Grey
- K815083
- K815083 LP
- Moka - Mocha
- K815120
- K815120 LP
- K. Gri - D. Grey
- K815094
- K815094 LP
- Bej - Beige
- K815105
- K815105 LP

- K842302 Siyah - Black
- K842313 Vizon - Mink
- K842324 Moka - Mocha
- K842335 Bej - Beige
- K842346 Fildisi - Ivory
- K842350 Gri - Grey
- K842361 K. Gri - D. Grey

- K815024 Siyah - Black
- K815013 Vizon - Mink
- K815002 Moka - Mocha
- K814980 Bej - Beige
- K814991 Fildisi - Ivory
- K814965 Gri - Grey
- K814976 K. Gri - D. Grey

Ararat Mat - Matt				
Performance Data According to ASTM Standards				
C.O.F Wet / Dry	Moisture Absorbition	Breaking Strength	MOHs	Shade Variation
≥ 0.60 ≥ 0.80	< 0.5%	> 900 lbs.	6	V2

Ararat Lappato				
Performance Data According to ASTM Standards				
C.O.F Wet / Dry	Moisture Absorbition	Breaking Strength	MOHs	Shade Variation
≥ 0.60 ≥ 0.80	< 0.5%	> 900 lbs.	6	V2

Ararat Hammered				
Performance Data According to ASTM Standards				
C.O.F Wet / Dry	Moisture Absorbition	Breaking Strength	MOHs	Shade Variation
≥ 0.60 ≥ 0.80	< 0.5%	> 800 lbs.	9	V2

Applications			
	Commercial	Light Commercial	Residentialt
Floors - Floors - Floors	√	√	√
Walls - Walls - Walls	√	√	√



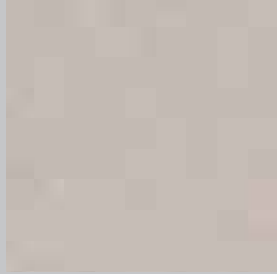
Kinetic



EN 14411 Group Bla

Kinetic

M 60x60cm / 24"x24" - M 30x60cm / 12"x24" - M 45x45cm / 18"x18" - M 30x30cm / 12"x12"
colorbody porcelain



Krem - Cream
K849395 Mat - Matt R9 (60x60)
K849395R Mat - Matt R9 (60x60)
K849406 Grip R10B (60x60)
K849406R Grip R10B (60x60)

K848392 Mat - Matt R9 (30x60)
K848392R Mat - Matt R9 (30x60)
K848392 LP (30x60)
K848392 LPR (30x60)
K848414 Grip R10B (30x60)
K848414R Grip R10B (30x60)

K848230 Mat - Matt R9 (45x45)
K848230R Mat - Matt R9 (45x45)
K848252 Grip R10B (45x45)
K848252R Grip R10B (45x45)

K853083 Mat - Matt R9 (30x30)

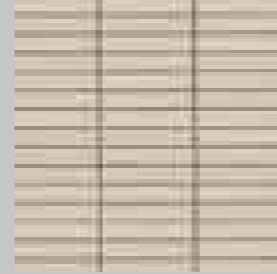


Vizon - Mink
K849362 Mat - Matt R9 (60x60)
K849362R Mat - Matt R9 (60x60)
K849373 Grip R10B (60x60)
K849373R Grip R10B (60x60)

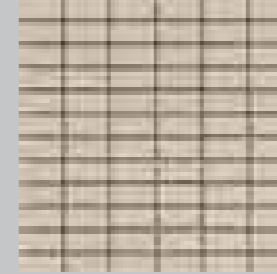
K848355 Mat - Matt R9 (30x60)
K848355R Mat - Matt R9 (30x60)
K848355 LP (30x60)
K848355 LPR (30x60)
K848370 Grip R10B (30x60)
K848370R Grip R10B (30x60)

K848193 Mat - Matt R9 (45x45)
K848193R Mat - Matt R9 (45x45)
K848215 Grip R10B (45x45)
K848215R Grip R10B (45x45)

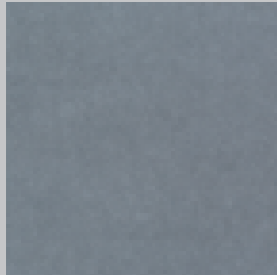
K853072 Mat - Matt R9 (30x30)



Bordur
3x15cm / 1"x6"
K052592 Krem - Cream
K052581 Vizon - Mink
K052570 Gri - Grey
K052566 Antrasit



Bordur
2.5x5cm / 1"x2"
K052636 Krem - Cream
K052625 Vizon - Mink
K052614 Gri - Grey
K052603 Antrasit

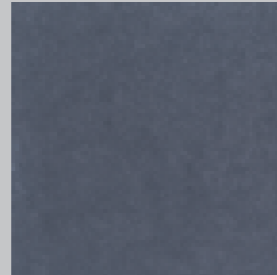


Gri - Grey
K849336 Mat - Matt R9 (60x60)
K849336R Mat - Matt R9 (60x60)
K849340 Grip R10B (60x60)
K849340R Grip R10B (60x60)

K848311 Mat - Matt R9 (30x60)
K848311R Mat - Matt R9 (30x60)
K848311 LP (30x60)
K848311 LPR (30x60)
K848333 Grip R10B (30x60)
K848333R Grip R10B (30x60)

K848156 Mat - Matt R9 (45x45)
K848156R Mat - Matt R9 (45x45)
K848171 Grip R10B (45x45)
K848171R Grip R10B (45x45)

K852092 Mat - Matt R9 (30x30)



Antrasit
K849303 Mat - Matt R9 (60x60)
K849303R Mat - Matt R9 (60x60)
K849314 Grip R10B (60x60)
K849314R Grip R10B (60x60)

K848274 Mat - Matt R9 (30x60)
K848274R Mat - Matt R9 (30x60)
K848274 LP (30x60)
K848274 LPR (30x60)
K848296 Grip R10B (30x60)
K848296R Grip R10B (30x60)

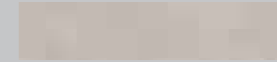
K848112 Mat - Matt R9 (45x45)
K848112R Mat - Matt R9 (45x45)
K848134 Grip R10B (45x45)
K848134R Grip R10B (45x45)

K853061 Mat - Matt R9 (30x30)



Basamak - Tread
45x45 cm / 18"x18"
K853201 Krem - Cream
K853190 Vizon - Mink
K853186 Gri - Grey
K853175 Antrasit

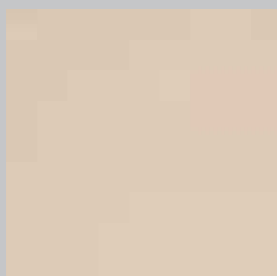
30x30 cm / 12"x12"
K853120 Krem - Cream
K853116 Vizon - Mink
K853105 Gri - Grey
K853094 Antrasit



Süpürgelik - Bullnose skirting
8.5x60 cm / 4"x24"
K853282 Krem - Cream
K853271 Vizon - Mink
K853260 Gri - Grey
K853256 Antrasit

8.5x45 cm / 4"x18"
K853245 Krem - Cream
K853234 Vizon - Mink
K853223 Gri - Grey
K853212 Antrasit

7x30 cm / 3"x12"
K853164 Krem - Cream
K853153 Vizon - Mink
K853142 Gri - Grey
K853131 Antrasit



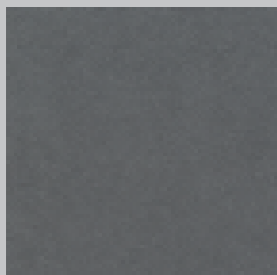
Krem - Cream
K849410 Rolyef - Relief R10A (60x60)
K849410R Rolyef - Relief R10A (60x60)

K848263 Rolyef - Relief R10A (45x45)
K848263R Rolyef - Relief R10A (45x45)



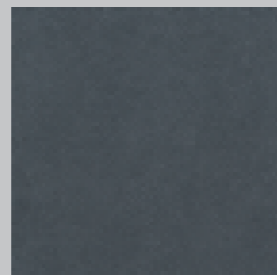
Vizon - Mink
K849384 Rolyef - Relief R10A (60x60)
K849384R Rolyef - Relief R10A (60x60)

K848226 Rolyef - Relief R10A (45x45)
K848226R Rolyef - Relief R10A (45x45)



Gri - Grey
K849351 Rolyef - Relief R10A (60x60)
K849351R Rolyef - Relief R10A (60x60)

K848182 Rolyef - Relief R10A (45x45)
K848182R Rolyef - Relief R10A (45x45)



Antrasit
K849325 Rolyef - Relief R10A (60x60)
K849325R Rolyef - Relief R10A (60x60)

K848145 Rolyef - Relief R10A (45x45)
K848145R Rolyef - Relief R10A (45x45)

Gripp özellikli ürünlerde, minimum sipariş miktar 7 palettir - Minimum order for Gripp is 7 pallets
Mindestbestellmenge für Gripp ist 7 paletten - La quantité minimum de commande est 7 palettes pour les produits ayant les caractéristiques de gripp.

Kinetic Mat - Matt				
Performance Data According to ASTM Standards				
C.O.F Wet / Dry	Moisture Absorbition	Breaking Strength	MOHs	Shade Variation
≥ 0.60 ≥ 0.80	< 0.5%	> 900 lbs.	6	V2

Applications			
	Commercial	Light Commercial	Residential
Floors - Floors - Floors	√	√	√
Walls - Walls - Walls	√	√	√



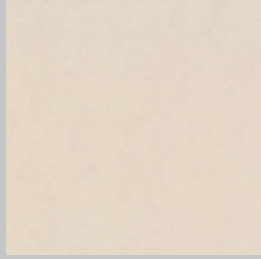
Cemento



EN 14411 Group Bla

Cemento

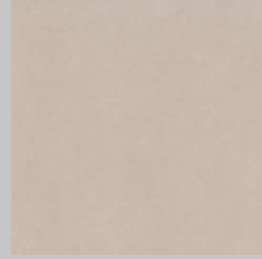
M 60x60cm / 24"x24" - M 30x60cm / 12"x24" - M 45x45cm / 18"x18"
colorbody porcelain



Krem - Cream
K849443 Mat - Matt R9 (60x60)
K849443R Mat - Matt R9 (60x60)
K849480 Grip R10B (60x60)
K849480R Grip R10B (60x60)

K848576 Mat - Matt R9 (30x60)
K848576R Mat - Matt R9 (30x60)
K848576 LP (30x60)
K848576 LPR (30x60)
K848613 Grip R10B (30x60)
K848613R Grip R10B (30x60)

K848451 Mat - Matt R9 (45x45)
K848451R Mat - Matt R9 (45x45)
K848495 Grip R10B (45x45)
K848495R Grip R10B (45x45)



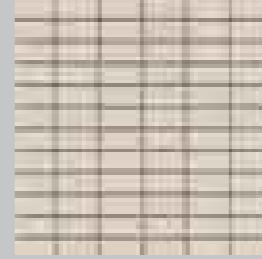
Moka - Mocha
K849454 Mat - Matt R9 (60x60)
K849454R Mat - Matt R9 (60x60)
K849491 Grip R10B (60x60)
K849491R Grip R10B (60x60)

K848580 Mat - Matt R9 (30x60)
K848580R Mat - Matt R9 (30x60)
K848580 LP (30x60)
K848580 LPR (30x60)
K848623 Grip R10B (30x60)
K848623R Grip R10B (30x60)

K848462 Mat - Matt R9 (45x45)
K848462R Mat - Matt R9 (45x45)
K848506 Grip R10B (45x45)
K848506R Grip R10B (45x45)



Bordur
3x15cm / 1"x6"
K052850 Krem - Cream
K052861 Moka - Mocha
K052846 Vizon - Mink
K052835 Gri - Grey



Bordur
2.5x5cm / 1"x2"
K052905 Krem - Cream
K052916 Moka - Mocha
K052894 Vizon - Mink
K052883 Gri - Grey



Vizon - Mink
K849432 Mat - Matt R9 (60x60)
K849432R Mat - Matt R9 (60x60)
K849476 Grip R10B (60x60)
K849476R Grip R10B (60x60)

K848565 Mat - Matt R9 (30x60)
K848565R Mat - Matt R9 (30x60)
K848565 LP (30x60)
K848565 LPR (30x60)
K848602 Grip R10B (30x60)
K848602R Grip R10B (30x60)

K848440 Mat - Matt R9 (45x45)
K848440R Mat - Matt R9 (45x45)
K848484 Grip R10B (45x45)
K848484R Grip R10B (45x45)



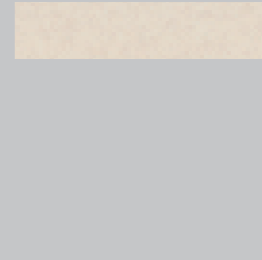
Gri - Grey
K849421 Mat - Matt R9 (60x60)
K849421R Mat - Matt R9 (60x60)
K849465 Grip R10B (60x60)
K849465R Grip R10B (60x60)

K848554 Mat - Matt R9 (30x60)
K848554R Mat - Matt R9 (30x60)
K848554 LP (30x60)
K848554 LPR (30x60)
K848591 Grip R10B (30x60)
K848591R Grip R10B (30x60)

K848436 Mat - Matt R9 (45x45)
K848436R Mat - Matt R9 (45x45)
K848473 Grip R10B (45x45)
K848473R Grip R10B (45x45)

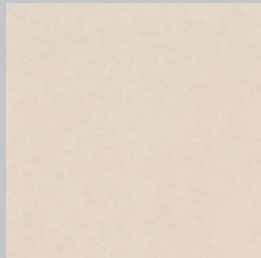


Basamak - Tread
45x45 cm / 18"x18"
K853315 Krem - Cream
K853326 Moka - Mocha
K853304 Vizon - Mink
K853293 Gri - Grey



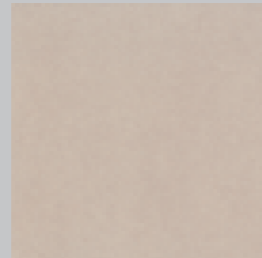
Süpürgelik - Bullnose skirting
8.5x60 cm / 4"x24"
K853396 Krem - Cream
K853400 Moka - Mocha
K853385 Vizon - Mink
K853374

8.5x45 cm / 4"x18"
K853352 Krem - Cream
K853363 Moka - Mocha
K853341 Vizon - Mink
K853330 Gri - Grey



Krem - Cream
K850246 Ahşap-Wood R10A (60x60)
K850246R Ahşap-Wood R10A (60x60)

K850165 Ahşap-Wood R10A (45x45)
K850165R Ahşap-Wood R10A (45x45)



Moka - Mocha
K850250 Ahşap-Wood R10A (60x60)
K850250R Ahşap-Wood R10A (60x60)

K850176 Ahşap-Wood R10A (45x45)
K850176R Ahşap-Wood R10A (45x45)



Vizon - Mink
K850235 Ahşap-Wood R10A (60x60)
K850235R Ahşap-Wood R10A (60x60)

K850154 Ahşap-Wood R10A (45x45)
K850154R Ahşap-Wood R10A (45x45)



Gri - Grey
K850224 Ahşap - Wood R10A (60x60)
K850224R Ahşap - Wood R10A (60x60)

K850143 Ahşap - Wood R10A (45x45)
K850143R Ahşap - Wood R10A (45x45)

Gripp özellikli ürünlerde, minimum sipariş miktar 7 palettir - Minimum order for Gripp is 7 pallets
Mindestbestellmenge für Gripp ist 7 paletten - La quantité minimum de commande est 7 palettes pour les produits ayant les caractéristiques de gripp.

Cemento Mat - Matt				
Performance Data According to ASTM Standards				
C.O.F Wet / Dry	Moisture Absorbtion	Breaking Strength	MOHs	Shade Variation
≥ 0.60 ≥ 0.80	< 0.5%	> 900 lbs.	6	V2

Applications	Commercial		
	Commercial	Light Commercial	Residential
Floors - Floors - Floors	√	√	√
Walls - Walls - Walls	√	√	√



Arsemia



EN 14411 Group Bla

Arsemia

M 60x60cm / 24"x24" - M 30x60cm / 12"x24" - M 45x45cm / 18"x18"
colorbody porcelain



Sand
K817290 LP (60x60)
*K817290 LPR (60x60)

K815654 Mat - Matt (30x60) R9
*K815654R Mat - Matt (30x60)
K815654 LP (30x60)
*K815654 LPR (30x60)

K811394 Mat - Matt (45x45) R9
*K811394R Mat - Matt (45x45)
K811394 LP (45x45)
*K811394 LPR (45x45)



A. Gri - L. Grey
K817301 LP (60x60)
*K817301 LPR (60x60)

K815665 Mat - Matt (30x60) R9
*K815665R Mat - Matt (30x60)
K815665 LP (30x60)
*K815665 LPR (30x60)

K811372 Mat - Matt (45x45) R9
*K811372R Mat - Matt (45x45)
K811372 LP (45x45)
*K811372 LPR (45x45)



Bordur
7.5x7.5cm / 4"x4"
K044240 Sand
K044225 Moka - Mocha
K044236 Vizon - Mink
K044295 Süper Beyaz - Super White
K044251 A. Gri - L. Grey
K044262 K. Gri - D. Grey
K044273 Siyah - Black
K044284 Süper Siyah - Super Black



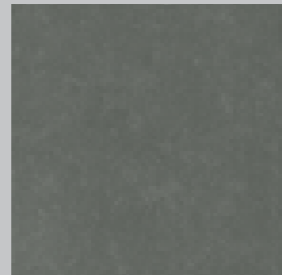
Bordur
3x15cm / 1"x6"
K035571 Sand
K035591 Moka - Mocha
K035545 Vizon - Mink
K048963 Süper Beyaz - Super White
K035556 A. Gri - L. Grey
K035560 K. Gri - D. Grey
K037030 Siyah - Black
K048974 Süper Siyah - Super Black



Moka - Mocha
K817334 LP (60x60)
*K817334 LPR (60x60)

K815691 Mat - Matt (30x60) R9
*K815691R Mat - Matt (30x60)
K815691 LP (30x60)
*K815691 LPR (30x60)

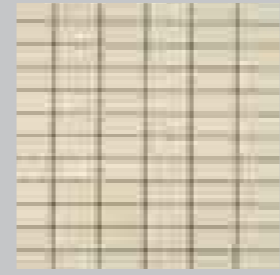
K811416 Mat - Matt (45x45) R9
*K811416R Mat - Matt (45x45)
K811416 LP (45x45)
*K811416 LPR (45x45)



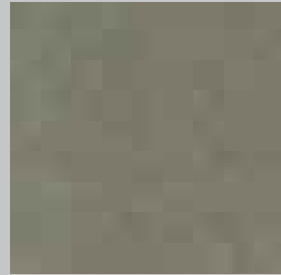
K. Gri - D. Grey
K817312 LP (60x60)
*K817312 LPR (60x60)

K815676 Mat - Matt (30x60) R9
*K815676R Mat - Matt (30x60)
K815676 LP (30x60)
*K815676 LPR (30x60)

K811383 Mat - Matt (45x45) R9
*K811383R Mat - Matt (45x45)
K811383 LP (45x45)
*K811383 LPR (45x45)



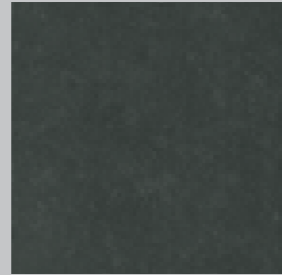
Bordur
2.5x5cm / 1"x2"
K044321 Sand
K044306 Moka - Mocha
K044310 Vizon - Mink
K044376 Süper Beyaz - Super White
K044332 A. Gri - L. Grey
K044343 K. Gri - D. Grey
K044354 Siyah - Black
K044365 Süper Siyah - Super Black



Vizon - Mink
K817323 LP (60x60)
*K817323 LPR (60x60)

K815680 Mat - Matt (30x60) R9
*K815680R Mat - Matt (30x60)
K815680 LP (30x60)
*K815680 LPR (30x60)

K811405 Mat - Matt (45x45) R9
*K811405R Mat - Matt (45x45)
K811405 LP (45x45)
*K811405 LPR (45x45)



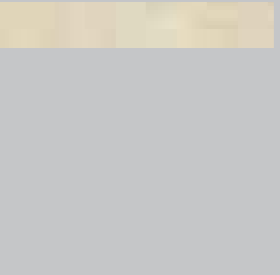
Siyah - Black
K817813 LP (60x60)
*K817813 LPR (60x60)

K817802 Mat - Matt (30x60) R9
*K817802R Mat - Matt (30x60)
K817802 LP (30x60)
*K817802 LPR (30x60)

K817791 Mat - Matt (45x45) R9
*K817791R Mat - Matt (45x45)
K817791 LP (45x45)
*K817791 LPR (45x45)

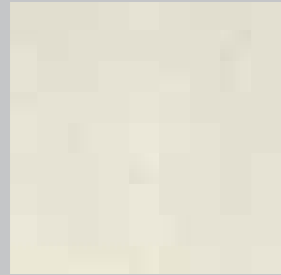


Basamak - Step tread
45x45 cm / 18"x18"
K815245 LP Sand
K815256 LP Moka - Mocha
K815260 LP Vizon - Mink
K844273 LP Süper Beyaz - Super White
K815223 LP A. Gri - L. Grey
K815234 LP K. Gri - D. Grey
K817835 LP Siyah - Black
K844262 LP Süper Siyah - Super Black



Süpürgelik - Bullnose skirting
8.5x60 cm / 4"x24"
K839222 Sand
K839233 Moka - Mocha
K839244 Vizon - Mink
K839211 Süper Beyaz - Super White
K839255 A. Gri - L. Grey
K839266 K. Gri - D. Grey
K839196 Siyah - Black
K839200 Süper Siyah - Super Black

8.5x45 cm / 4"x18"
K815072 Sand
K815050 Moka - Mocha
K815061 Vizon - Mink
K839594 Süper Beyaz - Super White
K815035 A. Gri - L. Grey
K815046 K. Gri - D. Grey
K817824 Siyah - Black
K839605 Süper Siyah - Super Black



Süper Beyaz - Super White
K839535 LP (60x60)
*K839535 LPR (60x60)

K839546 Mat - Matt (30x60) R9
*K839546R Mat - Matt (30x60)
Lappato K839546 LP (30x60)
*Lappato K839546 LPR (30x60)

K839550 Mat - Matt (45x45) R9
*K839550R Mat - Matt (45x45)
K839550 LP (45x45)
*K839550 LPR (45x45)



Süper Siyah - Super Black
K839561 LP (60x60)
*K839561 LPR (60x60)

K839572 Mat - Matt (30x60) R9
*K839572R Mat - Matt (30x60)
K839572 LP (30x60)
*K839572 LPR (30x60)

K839583 Mat - Matt (45x45) R9
*K839583R Mat - Matt (45x45)
K839583 LP (45x45)
*K839583 LPR (45x45)

*1mm ye kadar derz ile döşenebilir.
M(45x45) Ürünlerin kenarı pahlanmıştır, pahlandıktan sonraki ebat 442x442 mm dir.
M(60x60) Ürünlerin kenarı pahlanmıştır, pahlandıktan sonraki ebat 592x592 mm dir.
M(30x60) Ürünlerin kenarı pahlanmıştır, pahlandıktan sonraki ebat 292x592 mm dir.

*It is recommended to use max. 1mm joint for grouting.
M(45x45) The edges are rectified, the final product is size 442x442 mm.
M(60x60) The edges are rectified, the final product is size 592x592 mm.
M(30x60) The edges are rectified, the final product is size 292x592 mm.

*Es wird empfohlen, max. mit 1mm Fugenschnitt zu verfugen.
M(45x45) Die Kanten sind kalibriert nach der Kalibrierung der Kanten hat das Produkt das Format 442x442 mm.
M(60x60) Die Kanten sind kalibriert, nach der Kalibrierung der Kanten hat das Produkt das Format 592x592 mm.
M(30x60) Die Kanten sind kalibriert, nach der Kalibrierung der Kanten hat das Produkt das Format 292x592 mm.

*On conseille d'appliquer avec max. 1mm. de joint.
M(45x45) Les bords sont rectifiés, le produit fini est 442x442 mm.
M(60x60) Les bords sont rectifiés, le produit fini est 592x592 mm.
M(30x60) Les bords sont rectifiés, le produit fini est 292x592 mm.

Gripp özellikli ürünlerde, minimum sipariş miktar 7 palettir - Minimum order for Gripp is 7 pallets
Mindestbestellmenge für Gripp ist 7 paletten - La quantité minimum de commande est 7 palettes pour les produits ayant les caractéristiques de gripp.

Arsemia Mat - Matt				
Performance Data According to ASTM Standards				
C.O.F Wet / Dry	Moisture Absorbtion	Breaking Strength	MOHs	Shade Variation
≥ 0.60 ≥ 0.80	< 0.5%	> 500 lbs.	7-8	V2

Applications	Commercial		
	Commercial	Light Commercial	Residential
Floors - Floors - Floors	√	√	√
Walls - Walls - Walls	√	√	√



EN 14411 Group B1a

Elegant

M 60x60cm / 24"x24" - M 45x45cm / 18"x18"
colorbody porcelain



Krem - Cream
K838205R (60x60)
K832325R (45x45)

R9



Beyaz - White
K832362R (45x45)

R9



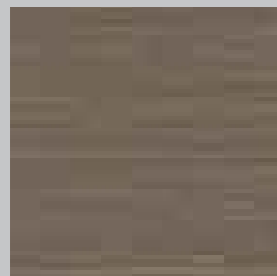
Bej - Beige
K832336R (45x45)

R9



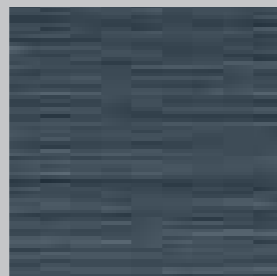
A. Gri - L. Grey
K838216R (60x60)
K832340R (45x45)

R9



Moka - Mocha
K838194R (60x60)
K832314R (45x45)

R9



Antrasit
K838220R (60x60)
K832351R (45x45)

R9



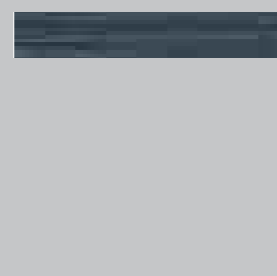
3x15 cm / 1"x6"
K044553 Bej - Beige
K044542 Krem - Cream
K044531 Moka - Mocha
K044586 Beyaz - White
K044564 A. Gri - L. Grey
K044575 Antrasit



Basamak - Step tread
45x45 cm / 18"x18"
K838360 Bej - Beige
K838356 Krem - Cream
K838345 Moka - Mocha
K838393 Beyaz - White
K838371 A. Gri - L. Grey
K838382 Antrasit



2.5x5 cm / 1"x2"
K049744 Bej - Beige
K049755 Krem - Cream
K049766 Moka - Mocha
K049770 Beyaz - White
K049781 A. Gri - L. Grey
K049792 Antrasit



Süpürgelik - Bullnose skirting
8.5x60 cm / 4"x24"
K839001 Krem - Cream
K838990 Moka - Mocha
K839034 A. Gri - L. Grey
K839012 Antrasit

8.5x45 cm / 4"x18"
K838426 Bej - Beige
K838415 Krem - Cream
K838404 Moka - Mocha
K838452 Beyaz - White
K838430 A. Gri - L. Grey
K838441 Antrasit

M(45x45) Ürünlerin kenar pahlanmıştır, pahlandıktan sonraki ebat 442x442 mm dir.
M(60x60) Ürünlerin kenar pahlanmıştır, pahlandıktan sonraki ebat 592x592 mm dir.

M(45x45) The edges are rectified, the final product is size 442x442 mm.
M(60x60) The edges are rectified, the final product is size 592x592 mm.

M(45x45) Die Kanten sind kalibriert nach der Kalibrierung der Kanten hat das Produkt das Format 442x442 mm.
M(60x60) Die Kanten sind kalibriert, nach der Kalibrierung der Kanten hat das Produkt das Format 592x592 mm.

M(45x45) Les bords sont rectifiés, le produit fini est 442x442 mm.
M(60x60) Les bords sont rectifiés, le produit fini est 592x592 mm.

Elegant Mat - Matt				
Performance Data According to ASTM Standards				
C.O.F Wet / Dry	Moisture Absorption	Breaking Strength	MOHs	Shade Variation
≥ 0.60 ≥ 0.70	< 0.5%	> 350 lbs.	≥ 5	V2

Applications			
	Commercial	Light Commercial	Residential
Floors - Floors - Floors	√	√	√
Walls - Walls - Walls			



Harvey Nichols, İstanbul, TURKEY



EN 14411 Group Bla

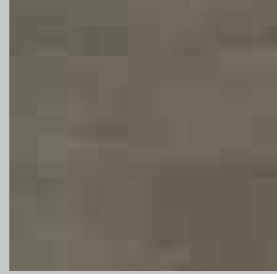
Damask Stone

M 60x60cm / 24"x24" - M 45x45cm / 18"x18"
colorbody porcelain



Bej - Beige
Mat - Matt
*K822902R (60x60)
K822876 (45x45)
*K822876R (45x45)

R9



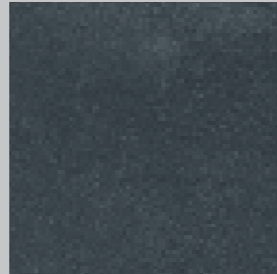
Vizon - Mink
Mat - Matt
*K822913R (60x60)
K822880 (45x45)
*K822880R (45x45)

R9



Gri - Grey
Mat - Matt
*824534R (60x60)
K824523 (45x45)
*824523R (45x45)

R9



Siyah - Black
Mat - Matt
*K822891R (60x60)
K822865 (45x45)
*K822865R (45x45)

R9



Basamak - Step tread
45x45 cm / 18"x18"
K844332 Bej - Beige
K844354 Vizon - Mink
K844321 Gri - Grey
K844343 Siyah - Black



Süpürgelik - Bullnose skirting
8.5x60 cm / 4"x24"
K844295 Bej - Beige
K844310 Vizon - Mink
K844284 Gri - Grey
K844306 Siyah - Black

8.5x45 cm / 4"x18"
K824991 Bej - Beige
K842475 Vizon - Mink
K824943 Gri - Grey
K824932 Siyah - Black

*1mm ye kadar derz ile döşenebilir.
M(45x45) Ürünlerin kenarı pahlanmıştır, pahlandıktan sonraki ebat 442x442 mm dir.
M(60x60) Ürünlerin kenarı pahlanmıştır, pahlandıktan sonraki ebat 592x592 mm dir.

*It is recommended to use max. 1mm joint for grouting.
M(45x45) The edges are rectified, the final product is size 442x442 mm.
M(60x60) The edges are rectified, the final product is size 592x592 mm.

*Es wird empfohlen, max. mit 1mm. Fugenschnitt zu verfugen.
M(45x45) Die Kanten sind kalibriert nach der Kalibrierung der Kanten hat das Produkt das Format 442x442 mm.
M(60x60) Die Kanten sind kalibriert, nach der Kalibrierung der Kanten hat das Produkt das Format 592x592 mm.

*On conseille d'appliquer avec max. 1mm. de joint.
M(45x45) Les bords sont rectifiés, le produit fini est 442x442 mm.
M(60x60) Les bords sont rectifiés, le produit fini est 592x592 mm.

Damask Stone Mat - Matt				
Performance Data According to ASTM Standards				
C.O.F Wet / Dry	Moisture Absorption	Breaking Strength	MOHs	Shade Variation
≥ 0.60 ≥ 0.70	< 0.1%	> 500 lbs.	7-8	V2

Applications	Applications		
	Commercial	Light Commercial	Residential
Floors - Floors - Floors	✓	✓	✓
Walls - Walls - Walls	✓	✓	✓



Damask Stone

Irish Stone

M 40x40cm / 18"x18"
colorbody porcelain



EN 14411 Group Bla



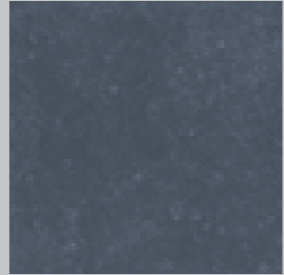
Fildişi - Ivory
K853411
K853411R

R9



A. Gri - L. Grey
K848683
K848683R

R9

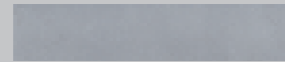


Antrasit
K848694
K848694R

R9



Basamak - Step tread
45x45 cm / 18"x18"
K853444 Fildişi - Ivory
K853422 A. Gri - L. Grey
K853433 Antrasit



Süpürgelik - Bullnose skirting
8.5x45 cm / 4"x18"
K853470 Fildişi - Ivory
K853455 A. Gri - L. Grey
K853466 Antrasit



EN 14411 Group Bla

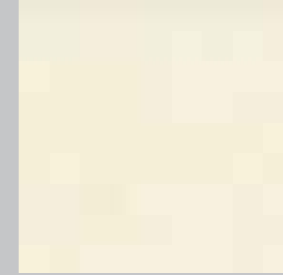
Dakota

M 30x60cm / 12"x24" - M 45x45cm / 18"x18"
colorbody porcelain



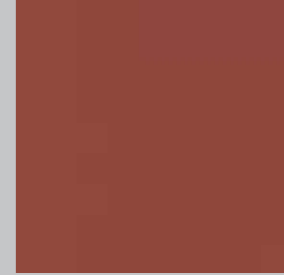
Bej - Beige
K837671 (30x60)
K837623 (45x45)

R9



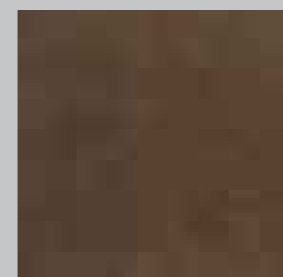
Krem - Cream
K845920 (30x60)
K845894 (45x45)

R9



Taba - Tobacco
K845931 (30x60)
K845905 (45x45)

R9



Moka - Mocha
K837682 (30x60)
K837634 (45x45)

R9



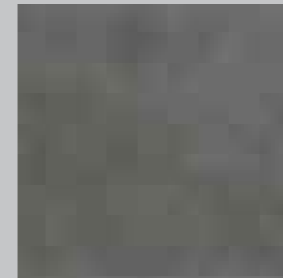
Bej, Gri - Beige, Grey
K845942 (30x60)
K845916 (45x45)

R9



Mavi, Gri - Blue, Grey
K837693 (30x60)
K837645 (45x45)

R9



K.Gri - D.Grey
K837704 (30x60)
K837656 (45x45)

R9



Siyah - Black
K837715 (30x60)
K837660 (45x45)

R9



Süpürgelik - Bullnose skirting
8.5x45 cm / 4"x18"
K843912 Bej - Beige
K845953 Krem - Cream
K845964 Taba - Tobacco
K843923 Moka - Mocha
K845975 Bej, Gri - Beige, Grey
K843934 Mavi, Gri - Blue, Grey
K843945 K.Gri - D.Grey
K843956 Siyah - Black

3.5x15 cm / 1"x6"

- K843960 Bej - Beige
- K845986 Krem - Cream
- K845990 Taba - Tobacco
- K843971 Moka - Mocha
- K846001 Bej, Gri - Beige, Grey
- K843982 Mavi, Gri - Blue, Grey
- K843993 K.Gri - D.Grey
- K844004 Siyah - Black

Damask Stone Mat - Matt				
Performance Data According to ASTM Standards				
C.O.F Wet / Dry	Moisture Absorbtion	Breaking Strength	MOHs	Shade Variation
≥ 0.60 ≥ 0.80	< 0.5%	> 420 lbs.	7-9	V4

Applications			
	Commercial	Light Commercial	Residential
Floors - Floors - Floors	√	√	√
Walls - Walls - Walls			

Dakota Mat - Matt				
Performance Data According to ASTM Standards				
C.O.F Wet / Dry	Moisture Absorbtion	Breaking Strength	MOHs	Shade Variation
≥ 0.60 ≥ 0.80	< 05 1%	> 500 lbs.	7-8	V2

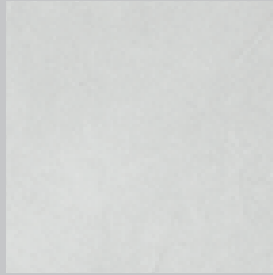
Applications			
	Commercial	Light Commercial	Residential
Floors - Floors - Floors	√	√	√
Walls - Walls - Walls	√	√	√



EN 14411 Group B1a

Arcadia

M 60x60cm / 24"x24" - M 30x60cm / 12"x24" - M 45x45cm / 18"x18"
colorbody porcelain



A.Gri - L.Grey
K841484 Mat - Matt (60x60) R9
*K841484R Mat - Matt (60x60)
K841484 LP (60x60)
*K841484 LPR (60x60)

K822972 Mat - Matt (30x60) R9
*K822972R Mat - Matt (30x60)
K822972 LP (30x60)
*K822972 LPR (30x60)

K822946 Mat - Matt (45x45) R9
*K822946R Mat - Matt (45x45)
K822946 LP (45x45)
*K822946 LPR (45x45)



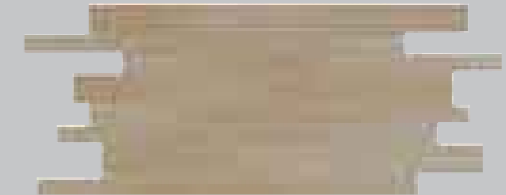
Fildişi - Ivory
K844015 Mat - Matt (60x60) R9
*K844015R Mat - Matt (60x60)
K844015 LP (60x60)
*K844015 LPR (60x60)

K832001 Mat - Matt (30x60) R9
*K832001R Mat - Matt (30x60)
K832001 LP (30x60)
*K832001 LPR (30x60)

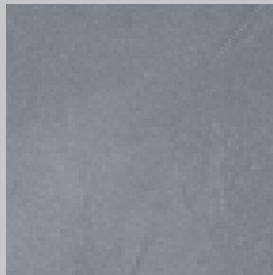
K838824 Mat - Matt (45x45) R9
*K838824R Mat - Matt (45x45)
K838824 LP (45x45)
*K838824 LPR (45x45)



Bordur
30x60 cm / 12"x24"
Siyah - Black
K040165 LP



Bordur
30x60 cm / 12"x24"
Bej - Beige
K040176 LP



K.Gri - D.Grey
K841473 Mat - Matt (60x60) R9
*K841473R Mat - Matt (60x60)
K841473 LP (60x60)
*K841473 LPR (60x60)

K823145 Mat - Matt (30x60) R9
*K823145R Mat - Matt (30x60)
K823145 LP (30x60)
*K823145 LPR (30x60)

K823134 Mat - Matt (45x45) R9
*K823134R Mat - Matt (45x45)
K823134 LP (45x45)
*K823134 LPR (45x45)



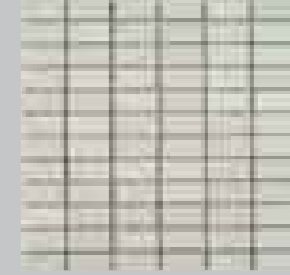
Bej - Beige
K841495 Mat - Matt (60x60) R9
*K841495R Mat - Matt (60x60)
K841495 LP (60x60)
*K841495 LPR (60x60)

K822961 Mat - Matt (30x60) R9
*K822961R Mat - Matt (30x60)
K822961 LP (30x60)
*K822961 LPR (30x60)

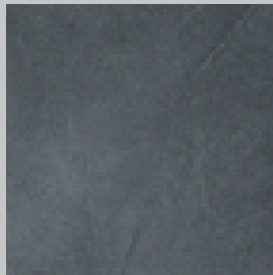
K822935 Mat - Matt (45x45) R9
*K822935R Mat - Matt (45x45)
K822935 LP (45x45)
*K822935 LPR (45x45)



3x15cm / 1"x6"
K040202 LP A.Gri - L.Grey
K040213 LP K.Gri - D.Grey
K040224 LP Siyah - Black
K049140 LP Fildişi - Ivory
K040235 LP Bej - Beige
K049136 LP Moka - Mocha



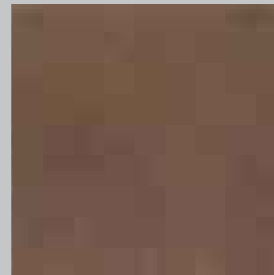
2.5x5cm / 1"x2"
K044402 A.Gri - L.Grey
K044413 K.Gri - D.Grey
K044435 Siyah - Black
K044380 Fildişi - Ivory
K044391 Bej - Beige
K044424 Moka - Mocha



Siyah - Black
K841506 Mat - Matt (60x60) R9
*K841506R Mat - Matt (60x60)
K841506 LP (60x60)
*K841506 LPR (60x60)

(30x60) R9
K822950 Mat - Matt (30x60)
*K822950R Mat - Matt (30x60)
K822950 LP (30x60)
*K822950 LPR (30x60)

(45x45) R9
K822924 Mat - Matt (45x45)
*K822924R Mat - Matt (45x45)
K822924 LP (45x45)
*K822924 LPR (45x45)



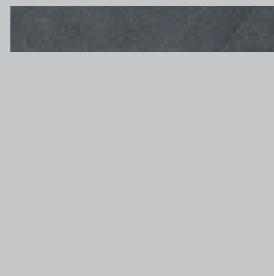
Moka - Mocha
K844026 Mat - Matt (60x60) R9
*K844026R Mat - Matt (60x60)
K844026 LP (60x60)
*K844026 LPR (60x60)

K831990 Mat - Matt (30x60) R9
*K831990R Mat - Matt (30x60)
K831990 LP (30x60)
*K831990 LPR (30x60)

K838802 Mat - Matt (45x45) R9
*K838802R Mat - Matt (45x45)
K838802 LP (45x45)
*K838802 LPR (45x45)



Basamak - Step tread
45x45 cm / 18"x18"
K842501 A. Gri - L. Grey
K842512 K. Gri - D. Grey
K842523 Siyah - Black
K842545 Fildişi - Ivory
K842534 Bej - Beige
K842556 Moka - Mocha



Süpürgelik - Bullnose skirting
8.5x60 cm / 4"x24"
K839303 A. Gri - L. Grey
K839292 K. Gri - D. Grey
K839281 Siyah - Black
K839325 Fildişi - Ivory
K839314 Bej - Beige
K839336 Moka - Mocha

8.5x45 cm / 4"x18"
K824954 A. Gri - L. Grey
K824965 K. Gri - D. Grey
K824976 Siyah - Black
K842486 Fildişi - Ivory
K824980 Bej - Beige
K842490 Moka - Mocha

3x15 ve 30x60 kesme bordurları rektifiye edilmiş karolarla kullanılmalıdır.
3x15 and 30x60 cut borders must be set together with non-rectified tiles.
Die 3x15 und 30x60 Schnittborduren dürfen mit nur unkalibrierten Fliesen verlegt werden.
Les listels 3x15 et 30x60 peuvent être utilisés avec des carreaux non rectifiés.

*1mm ye kadar derz ile döşenebilir.
M(45x45) Ürünlerin kenarı pahlanmıştır, pahlandıktan sonraki ebat 442x442 mm dir.
M(60x60) Ürünlerin kenarı pahlanmıştır, pahlandıktan sonraki ebat 592x592 mm dir.
M(30x60) Ürünlerin kenarı pahlanmıştır, pahlandıktan sonraki ebat 292x592 mm dir.

*It is recommended to use max. 1mm joint for grouting.
M(45x45) The edges are rectified, the final product is size 442x442 mm.
M(60x60) The edges are rectified, the final product is size 592x592 mm.
M(30x60) The edges are rectified, the final product is size 292x592 mm.

*Es wird empfohlen, max. mit 1mm. Fugenschnitt zu verfugen.
M(45x45) Die Kanten sind kalibriert nach der Kalibrierung der Kanten hat das Produkt das Format 442x442 mm.
M(60x60) Die Kanten sind kalibriert, nach der Kalibrierung der Kanten hat das Produkt das Format 592x592 mm.
M(30x60) Die Kanten sind kalibriert, nach der Kalibrierung der Kanten hat das Produkt das Format 292x592 mm.

*On conseille d'appliquer avec max. 1mm. de joint.
M(45x45) Les bords sont rectifiés, le produit fini est 442x442 mm.
M(60x60) Les bords sont rectifiés, le produit fini est 592x592 mm.
M(30x60) Les bords sont rectifiés, le produit fini est 292x592 mm.

Arcadia Mat - Matt				
Performance Data According to ASTM Standards				
C.O.F Wet / Dry	Moisture Absorbition	Breaking Strength	MOHs	Shade Variation
≥ 0.60 ≥ 0.70	< 0.5%	> 500 lbs.	7-8	V2

	Applications		
	Commercial	Light Commercial	Residential
Floors - Floors - Floors	√	√	√
Walls - Walls - Walls	√	√	√

Hardwood

M 45x45cm / 18"x18"
colorbody porcelain



EN 14411 Group B1a



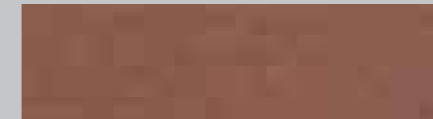
*Maple
K0832255R (15x60)
K845080R (30x60)
R9



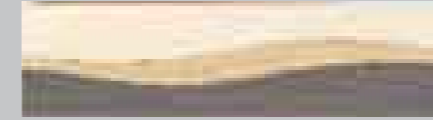
*Oak
K832244R (15x60)
K845076R (30x60)
R9



*Wenge
K832233R (15x60)
K845091R (30x60)
R9



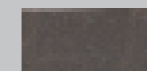
*Cherry
K832266R (15x60)
K845102R (30x60)
R9



Wave Bordur
15x60 cm / 6"x24"
Wenge, Oak
K044181



Wave Bordur
15x60 cm / 6"x24"
Maple, Wenge
K046130



Süpürgelik - Bullnose skirting
8.5x60 cm / 4"x24"
K839130 Wenge
K839141 Oak
K839152 Maple
K839163 Cherry

*1mm ye kadar derz ile döşenebilir.
Ürünlerin kenar pahlanmıştır, pahladıktan sonraki ebat 142x592 mm dir.

*It is recommended to use max. 1mm joint for grouting.
The edges are rectified, the final product is size 142x592 mm.

*Es wird empfohlen, max. mit 1mm Fugenschnitt zu verfugen.
Die Kanten sind kalibriert, nach der Kalibrierung der Kanten hat das Produkt das Format 142x592 mm.

*Il est conseillé d'appliquer au max. 1mm de joint.
Les bords sont rectifiés, le produit fini est 142x592 mm.

Hardwood Mat - Matt				
Performance Data According to ASTM Standards				
C.O.F Wet / Dry	Moisture Absorbtion	Breaking Strength	MOHs	Shade Variation
≥ 0.55 ≥ 0.70	< 0.5%	> 350 lbs.	≥ 5	V2

Applications	Applications		
	Commercial	Light Commercial	Residential
Floors - Floors - Floors	√	√	√
Walls - Walls - Walls			



EN 14411 Group B1a

Loft

M 60x60cm / 24"x24" - M 30x60cm / 12"x24"
colorbody porcelain



60x60cm / 24"x24"
Bakir - Cooper
K832664R

R10



30x60cm / 12"x24"
Bakir - Cooper
K832653R

R10



2.5x10 cm / 1"x4"
K047073



Süpürgelek - Bullnose skirting
8.5x60 cm / 4"x24"
K839174

*1mm ye kadar derz ile döşenebilir.
M(60X60) Ürünlerin kenarı pahlıdır, pahlıdan sonraki ebat 592x592 mm dir.
M(30X60) Ürünlerin kenarı pahlıdır, pahlıdan sonraki ebat 292x592 mm dir.

*It is recommended to use max. 1mm joint for grouting.
M(60X60) The edges are rectified, the final product is size 592x592 mm.
M(30X60) The edges are rectified, the final product is size 292x592 mm.

*Es wird empfohlen, max. mit 1mm Fugenschnitt zu verfugen.
M(60X60) Die Kanten sind kalibriert, nach der Kalibrierung der Kanten hat das Produkt das Format 592x592 mm.
M(30X60) Die Kanten sind kalibriert, nach der Kalibrierung der Kanten hat das Produkt das Format 292x592 mm.

*On conseille d'appliquer avec max. 1mm. de joint.
M(60X60) Les bords sont rectifiés, le produit fini est 592x592 mm.
M(30X60) Les bords sont rectifiés, le produit fini est 292x592 mm.

Hareket yoğunluğu fazla olan yerlerde kullanılmamalıdır.
It is not suitable for heavy traffic areas.
N'est pas conforme aux zones de trafiques denses.
Auf den Oberflächen mit starkem Verkehr nicht verwenden.

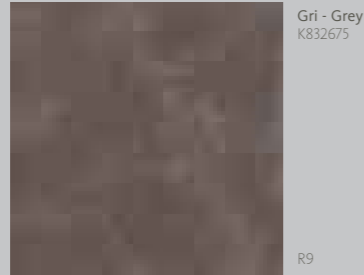
Loft Mat - Matt				
Performance Data According to ASTM Standards				
C.O.F Wet / Dry	Moisture Absorbition	Breaking Strength	MOHs	Shade Variation
≥ 0.55 ≤ 0.70	< 0.5%	> 350 lbs.	≥ 8	V2

Applications			
	Commercial	Light Commercial	Residential
Floors - Floors - Floors	√	√	√
Walls - Walls - Walls			



Metallica

M 45x45cm / 18"x18"
colorbody porcelain

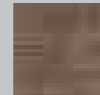


Gri - Grey
K832675

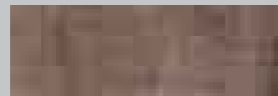
R9



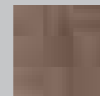
15x45cm / 6"x12"
Gri - Grey Line
K841403



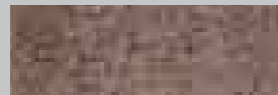
15x15cm / 6"x6"
Gri - Grey Line
K841436



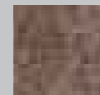
15x45cm / 6"x12"
Gri - Grey Dot
K841392



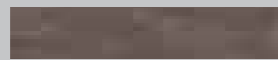
15x15cm / 6"x6"
Gri - Grey Dot
K841425



15x45cm / 6"x12"
Gri - Grey Floral
K841381



15x15cm / 6"x6"
Gri - Grey Floral
K841414



Süprügelik - Bullnose skirting
8.5x45 cm / 4"x18"
Gri - Grey
K839185

Hareket yoğunluğu fazla olan yerlerde kullanılmamalıdır
It is not suitable for heavy traffic areas
N'est pas conforme aux zones de trafiques denses
Auf den Oberflächen mit starkem Verkehr nicht verwenden.

Metallica Mat - Matt				
Performance Data According to ASTM Standards				
C.O.F Wet / Dry	Moisture Absorbition	Breaking Strength	MOHs	Shade Variation
≥ 0.50 ≥ 0.70	< 0.5%	> 350 lbs.	≥ 6	V2

Applications			
	Commercial	Light Commercial	Residential
Floors - Floors - Floors	√	√	√
Walls - Walls - Walls	√	√	√

VitrA Tech ile Doğal Görünümlü Porselen Karolar

Doğal görünümlü VitrA Tech karolar özel bir porselen teknolojisi ile üretiliyor. Mat, parlak ve değişik yüzey özelliklerine sahip olan karoların üzerindeki desenler de bu teknoloji sayesinde çeşitlilik kazanıyor ve doğal taş görünümleri kuvvetleniyor.

Değişik yüzey ve ebat çeşitliliğine sahip VitrA Tech karolar, her tür kaplama çözümüne cevap verirken, buldukları ortama estetik açıdan zenginlik katıyor. Porselen teknolojisinin bütün avantajlarına sahip olan bu seri; dayanıklılığı, kaymazlık ve kolay temizlenebilme özelliğiyle kafe, restoran, otel, iş yeri, alışveriş merkezi, otomobil showroom'u ve hava alanları gibi yoğun trafiğe açık birçok alanda tercih ediliyor.

VitrA Tech: Redesigning stone.

Inspired by natural stone's enduring aesthetic appeal, VitrA has made tiles that look just like stone but use special porcelain technology to pair easy-to-clean, anti-slip, hard-wearing functionality with matte, glossy or textured finishes.

Available in a wide range of sizes, VitrA Tech offers the beauty of stone to design-conscious, high-traffic environments - such as cafés, hotels, business and retail centres, cultural institutions and airports - that demand more from their materials.

VitrA Tech: Stein in neuem Design

Inspiriert von der natürlichen Ästhetik diverser Steinoberflächen entwarf VitrA eine Fliesenserie, die diese Optik perfekt widerspiegelt und gleichzeitig mit einer speziellen Feinsteinzeugtechnologie hergestellt wird. Neben ihrem ansprechenden Design besticht die Linie durch Rutschfestigkeit, einfache Reinigung, hohe Strapazierfähigkeit und optimale Funktionalität – egal ob bei mattiertem, glänzendem oder strukturiertem Finish.

VitrA Tech ist in verschiedenen Dimensionen erhältlich und macht die Schönheit von Steinoberflächen für höchste Designansprüche und intensiv beanspruchte Lebensräume zugänglich: für Cafés, Hotels, Geschäfts- und Einkaufszentren, kulturelle Einrichtungen, Flughäfen... Kurz: Überall dort, wo Material hart im Nehmen sein muss.

VitrA Tech: переосмысление камня.

Вдохновляясь непреходящей привлекательностью природного камня, фирма VitrA производит керамическую плитку, которая выглядит как камень, но является легко очищаемой, нескользкой, износостойкой. Благодаря особой технологии изготовления, прекрасные функциональные качества сочетаются с матовой, блестящей или фактурной отделкой.

Богатая гамма размеров плитки VitrA Tech позволяет использовать ее в различных зонах с интенсивным движением – кафе, гостиницах, деловых и торговых центрах, учреждениях культуры и аэропортах, где требуются улучшенные функциональные характеристики. Ее внешний вид - имитация природного камня - обеспечивает высокоэстетичный дизайн.

VitrA Tech: La pierre réinventée.

Recréer la durabilité et la beauté de la pierre naturelle, c'est le pari réussi des carrelages VitrA. Ils ont tout l'aspect de la pierre, avec les avantages d'une technologie céramique exclusive : facilité de nettoyage, efficacité anti-glisse et haute résistance, en finition mat, brillant ou relief.

Disponible dans un large choix de tailles, la ligne VitrA Tech apporte l'élégance de la pierre aux lieux de passage intense où l'esthétique a son importance, tels que les cafés, hôtels, centres commerciaux, quartiers d'affaires, lieux culturels et aéroports, qui tous exigent des revêtements de très haute qualité.





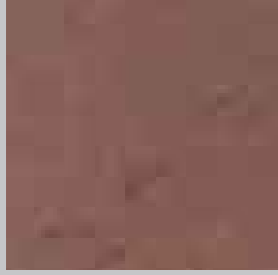
Porfido Stone



EN 14411 Group Bla

Porfido Stone

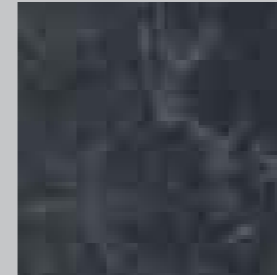
M 60x90cm / 24"x36" - M 40x40cm / 16"x16"



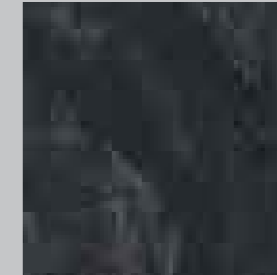
Taba - Tobacco
Mat - Matt
K815444 (60x90)
K815385 (40x40)



Taba - Tobacco
Parlak - Polished
K815455 (60x90)
K815396 (40x40)



Siyah - Black
Mat - Matt
K822261 (60x90)
K822294 (40x40)



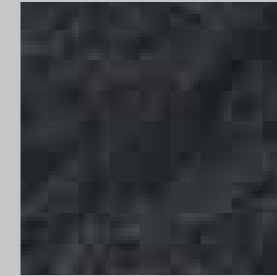
Siyah - Black
Parlak - Polished
K822272 (60x90)
K822305 (40x40)



Taba - Tobacco
Rölyef - Relief
K815466 (60x90)
K815400 (40x40)



Bej - Beige
Mat - Matt
K834543 (60x90)
K834576 (40x40)



Siyah - Black
Rölyef - Relief
K822283 (60x90)
K822316 (40x40)

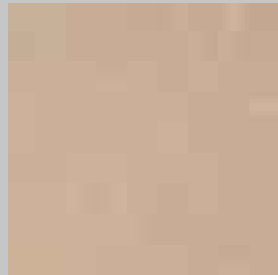


Basamak - Step tread
30x90 cm / 12"x36"
Taba - Tobacco
K840810 Mat - Matt
K840832 Parlak - Polished
K840821 Rölyef - Relief

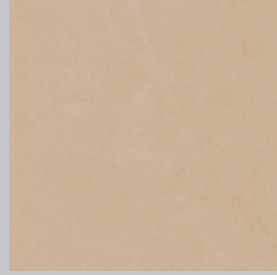
Bej - Beige
K840876 Mat - Matt
K840891 Parlak - Polished
K840880 Rölyef - Relief

Gri - Grey
K840843 Mat - Matt
K840865 Parlak - Polished
K840854 Rölyef - Relief

Siyah - Black
K840784 Mat - Matt
K840806 Parlak - Polished
K840795 Rölyef - Relief



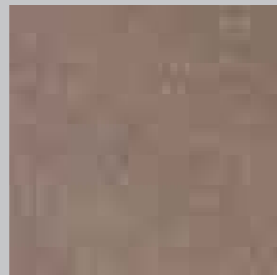
Bej - Beige
Parlak - Polished
K834554 (60x90)
K834580 (40x40)



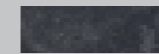
Bej - Beige
Rölyef - Relief
K834565 (60x90)
K834591 (40x40)



Gri - Grey
Mat - Matt
K815470 (60x90)
K815411 (40x40)



Gri - Grey
Parlak - Polished
K815481 (60x90)
K815422 (40x40)



Süpürgelik - Bullnose skirting
8x30 cm / 4"x12"
Taba - Tobacco
K841053 Mat - Matt
K841075 Parlak - Polished
K841064 Rölyef - Relief

Bej - Beige
K841112 Mat - Matt
K841134 Parlak - Polished
K841123 Rölyef - Relief

Gri - Grey
K841086 Mat - Matt
K841101 Parlak - Polished
K841090 Rölyef - Relief

Siyah - Black
K841020 Mat - Matt
K841042 Parlak - Polished
K841031 Rölyef - Relief



Üçgen süpürgelik - Triangle bullnose
8x30 cm / 4"x12"
Taba - Tobacco
K840935 Mat - Matt
K840950 Parlak - Polished
K840946 Rölyef - Relief

Bej - Beige
K840994 Mat - Matt
K841016 Parlak - Polished
K841005 Rölyef - Relief

Gri - Grey
K840961 Mat - Matt
K840983 Parlak - Polished
K840972 Rölyef - Relief

Siyah - Black
K840902 Mat - Matt
K840924 Parlak - Polished
K840913 Rölyef - Relief

**KAMUSAL BİNALAR VE MERKEZLER
PUBLIC BUILDINGS & CENTERS**

<i>IKEA St. Petersburg</i>	<i>Russia</i>
<i>Ikea-3 Moscow</i>	<i>Russia</i>
<i>IKEA Kazan</i>	<i>Russia</i>
<i>Theatre de Belgique</i>	<i>Belgium</i>
<i>Theatre @ Concert Hall - Sibiria</i>	<i>Russia</i>
<i>Kodak Cinema Hall</i>	<i>Russia</i>
<i>RAMSTORE 11 Moskova</i>	<i>Russia</i>
<i>RAMSTORE 10 Moskova</i>	<i>Russia</i>
<i>Darüssafaka Building</i>	<i>Turkey</i>
<i>Mega 2 Building</i>	<i>Russia</i>
<i>Mega 2 Project</i>	<i>Russia</i>
<i>Kartbahn Ralf Schuhmacher, Bispingen</i>	<i>Germany</i>
<i>Wellnescenter, Gummertsbach</i>	<i>Germany</i>
<i>Old Post Ofşce Renovation</i>	<i>Norvey</i>
<i>Military Academy</i>	<i>Turkey</i>
<i>Gendarmerie de Tulles</i>	<i>France</i>
<i>Türkcell Perpa</i>	<i>Turkey</i>
<i>PiscineMunicipale de Bonnes</i>	<i>France</i>
<i>Piscine du Moustoir- Lorient</i>	<i>France</i>
<i>Super U Cugnaux</i>	<i>France</i>
<i>Super U Saujon</i>	<i>France</i>
<i>SUPER U / Nexon</i>	<i>France</i>
<i>SUPER U / Nontron</i>	<i>France</i>
<i>INTERMARCHE / Les Herbiers</i>	<i>France</i>
<i>INTERMARCHE / Celle Sur Belle</i>	<i>France</i>
<i>INTERMARCHE / Beauvoir Sur Niort</i>	<i>France</i>
<i>INTERMARCHE / Perigueux</i>	<i>France</i>
<i>Chambre of Commerce</i>	<i>Turkey</i>
<i>Ankara Chambre of Commerce</i>	<i>Turkey</i>
<i>Universiade-Narlıdere İzmir</i>	<i>Turkey</i>
<i>San Diegueto Boys and Girls Club</i>	<i>USA</i>
<i>Suartek</i>	<i>Turkey</i>
<i>Carmi in Rosh</i>	<i>Israel</i>
<i>Nijnevartovsk</i>	<i>Russia</i>
<i>Krankenhaus, Hamburg-Boberg</i>	<i>Germany</i>
<i>Eldon Gardens Metro Station</i>	<i>United Kingdom</i>
<i>Ecole d' Application de Tours</i>	<i>France</i>
<i>Barcelona City of Justice</i>	<i>Spain</i>
<i>Intermarché de Guérande</i>	<i>France</i>
<i>LIDL</i>	<i>France</i>
<i>İncirlik Air Forces</i>	<i>Turkey</i>
<i>S.S Shoes Association</i>	<i>Turkey</i>
<i>Sok Market</i>	<i>Turkey</i>
<i>Colins Shops</i>	<i>Turkey</i>
<i>Yeni Sevgi Hospital</i>	<i>Turkey</i>
<i>Baskent Hospital</i>	<i>Turkey</i>
<i>Acibadem Hospital</i>	<i>Turkey</i>
<i>Yeditepe Ün. İstek Hospital</i>	<i>Turkey</i>
<i>Italian Hospital</i>	<i>Turkey</i>
<i>Acibadem Hospital</i>	<i>Turkey</i>
<i>Kent Hospital</i>	<i>Turkey</i>
<i>Hospital Itzehoe</i>	<i>Germany</i>
<i>Hospital Apolda</i>	<i>Germany</i>
<i>Hospital Perleberg</i>	<i>Germany</i>
<i>Hospital Schwerin</i>	<i>Germany</i>
<i>Hospital Hamburg-Harburg</i>	<i>Germany</i>
<i>Hospital Hamburg-Boberg</i>	<i>Germany</i>
<i>Hospital Eutin</i>	<i>Germany</i>
<i>Strasburg Hospital</i>	<i>France</i>
<i>Grenbergen Hospital Church</i>	<i>Belgium</i>
<i>Military Hospital /Moscow</i>	<i>Russia</i>
<i>Oncology Hospital(Ekaterinburg)</i>	<i>Russia</i>
<i>Geitavi Hospital</i>	<i>Lebanon</i>
<i>Tokuda Hospital</i>	<i>Japan</i>
<i>Akdeniz Ün. Hospital</i>	<i>Turkey</i>
<i>Nijnevartovsk Hospital</i>	<i>Russia</i>

**KAMUSAL BİNALAR VE MERKEZLER
PUBLIC BUILDINGS & CENTERS**

<i>Tranzumed Medizintechnik Hospital</i>	<i>Russia</i>
<i>Governement Hospital</i>	<i>Turkey</i>
<i>Iznik Governement Hospital</i>	<i>Turkey</i>
<i>Trio Hospital</i>	<i>Turkey</i>
<i>Anadolu VakŞ Hospital</i>	<i>Turkey</i>
<i>Florence Nightingale Hospital</i>	<i>Turkey</i>
<i>Osmancik Policlinic</i>	<i>Turkey</i>
<i>Dispensary Lavrentiya Anadyr</i>	<i>Russia</i>
<i>Ram Store Migros</i>	<i>Kazakhstan</i>
<i>Aksan Shopping Center</i>	<i>Turkey</i>
<i>EGS Shopping Center</i>	<i>Turkey</i>
<i>EGS Shopping Center</i>	<i>Turkey</i>
<i>Metrocity Shopping Center</i>	<i>Turkey</i>
<i>Tepe Shopping Center</i>	<i>Turkey</i>
<i>Bilkent Shopping Center</i>	<i>Turkey</i>
<i>Moskova Shopping Malls Samara</i>	<i>Russia</i>
<i>Ram Store Migros</i>	<i>Russia</i>
<i>Migros Shopping Center</i>	<i>Turkey</i>
<i>Aksan Shopping Center</i>	<i>Turkey</i>
<i>NEO Shopping Mall</i>	<i>Turkey</i>
<i>Faringdon School</i>	<i>United Kingdom</i>
<i>St John's School</i>	<i>United Kingdom</i>
<i>İlhan Ertekin Primary School</i>	<i>Turkey</i>
<i>The Woodlands College Park High School</i>	<i>USA</i>
<i>Cimentas High School</i>	<i>Turkey</i>
<i>School St. Coeur Amchit</i>	<i>Lebanon</i>
<i>School St. Joseph</i>	<i>Lebanon</i>
<i>Duddelange School</i>	<i>Germanymany</i>
<i>Bamka High school</i>	<i>Turkey</i>
<i>Private Dogus High School</i>	<i>Turkey</i>
<i>Northwest Kent Technical Coll.</i>	<i>United Kingdom</i>
<i>College Pierre et Marie Curry Royan</i>	<i>France</i>
<i>TED College</i>	<i>Turkey</i>
<i>Jam Haver College</i>	<i>Lebanon</i>
<i>Private Kocaeli Education Campus</i>	<i>Turkey</i>
<i>9 Eylül Ün. Buca Campus</i>	<i>Turkey</i>
<i>High Tech Ün.</i>	<i>Turkey</i>
<i>İTÜ Ün.</i>	<i>Turkey</i>
<i>İşikkent Campus</i>	<i>Turkey</i>
<i>Kocaeli Üiversity Umuttepe Campus</i>	<i>Turkey</i>
<i>ODTÜ Üniversty Social Building</i>	<i>Turkey</i>
<i>Ondokuz Mayıs University</i>	<i>Turkey</i>
<i>Ziraat Faculty</i>	<i>Turkey</i>
<i>Manas Üiversity</i>	<i>Kirgizistan</i>
<i>Verdun 732 Commercial Center</i>	<i>Lebanon</i>
<i>Münich Exhibition Center</i>	<i>Germany</i>
<i>Royal Center</i>	<i>Belgium</i>
<i>Alkent Hillside Sport Center</i>	<i>Turkey</i>
<i>Hillside Sport Center</i>	<i>Turkey</i>
<i>Austria Center</i>	<i>Belgium</i>
<i>Ashbourne Leisure Center</i>	<i>Ireland</i>
<i>Westmanstown Leisure Center</i>	<i>Ireland</i>
<i>Council Leisure Center</i>	<i>Ireland</i>
<i>Carrick on Shannon LC</i>	<i>Ireland</i>
<i>Navan LC</i>	<i>Ireland</i>
<i>Drogheda Council LC</i>	<i>Ireland</i>
<i>Park West Leisure Center</i>	<i>Ireland</i>
<i>Applewood Leisure Center</i>	<i>Ireland</i>
<i>Clarondon St Leisure Center</i>	<i>Ireland</i>
<i>St. Nikolas Park Pool</i>	<i>Lebanon</i>
<i>Swimmingpool Gummelsbach</i>	<i>Germany</i>
<i>Swimmingpool Plaettenberg</i>	<i>Germany</i>
<i>Universiade-Manisa Pool</i>	<i>Turkey</i>
<i>KTÜ Swimming Pool</i>	<i>Turkey</i>
<i>Rostrevor Private Pool</i>	<i>Ireland</i>
<i>Enniskery Private Pool</i>	<i>Ireland</i>

**KAMUSAL BİNALAR VE MERKEZLER
PUBLIC BUILDINGS & CENTERS**

<i>Etterbeek Swimming Pool Center</i>	<i>Belgium</i>
<i>BEST Swimming Pool</i>	<i>Netherlands</i>
<i>Aquapark Sochi</i>	<i>Russia</i>
<i>Aquapark Gelencik</i>	<i>Russia</i>
<i>Lujniki Stadium VIP Lounge</i>	<i>Russia</i>
<i>19 Mayıs Stadium</i>	<i>Turkey</i>
<i>Tatilya Fun City</i>	<i>Turkey</i>
<i>MEGA 2 Tic. Fun City Moskova</i>	<i>Russia</i>
<i>Sheremetirvo Airport</i>	<i>Russia</i>
<i>Sportairport, Fassberg</i>	<i>Germany</i>
<i>Moldova Airport</i>	<i>Moldovia</i>
<i>Maldiv Airport</i>	<i>Maldiv</i>
<i>Cengiz Topel Airport</i>	<i>Turkey</i>
<i>Atatürk Airport</i>	<i>Turkey</i>
<i>Ercan Airport</i>	<i>Cyprus</i>
<i>Sheremetyevo-3 Airport/Moscow</i>	<i>Russia</i>
<i>Berlin (Schönefeld) Ariport</i>	<i>Germany</i>
<i>Münich Airport</i>	<i>Germany</i>
<i>Domedodova Airport</i>	<i>Russia</i>
<i>Real Hypermarket</i>	<i>Russia</i>
<i>Hochtief Mosmart Hypermarket</i>	<i>Russia</i>
<i>Carrefour Maltepe</i>	<i>Turkey</i>
<i>Kartal Real Hypermarket</i>	<i>Turkey</i>
<i>MOSMART Hypermarket Moskova</i>	<i>Russia</i>
<i>CIPPA Old People House</i>	<i>Germany</i>
<i>Young Men's Christian Association</i>	<i>Canada</i>
<i>International House-Halifax</i>	<i>Canada</i>
<i>IKEA 2 (OBI) Moskova</i>	<i>Russia</i>
<i>IKEA St. Petersburg</i>	<i>Russia</i>

TİCARİ ALANLAR / COMMERCIAL AREAS

<i>Birtat Yourt Industry</i>	<i>Turkey</i>
<i>Tepe Furniture Industry</i>	<i>Turkey</i>
<i>Oret Meat Industry</i>	<i>Turkey</i>
<i>Rodi Jeans Industry</i>	<i>Turkey</i>
<i>Sarki Karaagac Milk Industry</i>	<i>Turkey</i>
<i>Akdeniz Milk Products Industry</i>	<i>Turkey</i>
<i>Profit Building</i>	<i>Turkey</i>
<i>Limak Tekel Building</i>	<i>Turkey</i>
<i>Mogaz Building</i>	<i>Turkey</i>
<i>Piyale Factory</i>	<i>Turkey</i>
<i>Danone Factory</i>	<i>Russia</i>
<i>Philip Morris Factory</i>	<i>Russia</i>
<i>Philip Moris Factory</i>	<i>Russia</i>
<i>Merloni Factory</i>	<i>Russia</i>
<i>Obasan Food Factory</i>	<i>Turkey</i>
<i>Sise Cam Factory</i>	<i>Turkey</i>
<i>Ipek Shampoo Factory</i>	<i>Turkey</i>
<i>AVON Factory Moskova</i>	<i>Russia</i>
<i>Banat AŞ</i>	<i>Turkey</i>
<i>Seliz Contruction</i>	<i>Turkey</i>
<i>Desa Contruction</i>	<i>Turkey</i>
<i>Anadolu Efes Brewery</i>	<i>Turkey</i>
<i>Anadolu Efes Brewery</i>	<i>Turkey</i>
<i>Marmara Leather Trade</i>	<i>Turkey</i>
<i>Texaco Gas Station</i>	<i>Germany</i>
<i>Turkish Governement Airports</i>	<i>Turkey</i>
<i>Westfaelischer Anzeiger, Kamen</i>	<i>Germany</i>
<i>Industrie + Handelskammer, Dresden</i>	<i>Germany</i>
<i>Kanyon Harvey Nichols</i>	<i>Turkey</i>
<i>Kanyon Cacharel</i>	<i>Turkey</i>
<i>D@R Music Store</i>	<i>Turkey</i>

OTOMOBİL SHOWROOMLARI / CAR DEALERS

<i>Ford Otosan</i>	<i>Turkey</i>
<i>Ford Otosan</i>	<i>Turkey</i>
<i>Mazda Showroom</i>	<i>Turkey</i>
<i>Alfa Romeo Showroom</i>	<i>Turkey</i>
<i>Saab Motor Car Showroom</i>	<i>United Kingdom</i>
<i>Toyota Showroom</i>	<i>Belgium</i>
<i>Ford Kargo Service</i>	<i>Turkey</i>
<i>Ford Cargo Service</i>	<i>Turkey</i>
<i>Renault – Nissan Auto Center</i>	<i>Russia</i>
<i>TOYOTA Auto Center R.on Don</i>	<i>Russia</i>
<i>Toyota Worksite</i>	<i>Turkey</i>
<i>Opel Genoto</i>	<i>Turkey</i>
<i>Isuzu</i>	<i>Turkey</i>
<i>Mercedes</i>	<i>Turkey</i>
<i>Volkswagen</i>	<i>Turkey</i>
<i>Tofaş</i>	<i>Turkey</i>
<i>Opel Gedizler</i>	<i>Turkey</i>
<i>Baytur Toyota</i>	<i>Turkey</i>
<i>Toyota Haus</i>	<i>Germany</i>
<i>VW Autostadt, Wolfsburg</i>	<i>Germany</i>
<i>VM-House, Kopenhag.</i>	<i>Denmark</i>
<i>Audi Haus</i>	<i>Germany</i>
<i>Limited Cars, Hamburg</i>	<i>Germany</i>
<i>Audi Haus, Kiel</i>	<i>Germany</i>

İŞYERLERİ VE BANKALAR / OFFICES & BANKS

<i>Egebank</i>	<i>Turkey</i>
<i>Is Bank</i>	<i>Turkey</i>
<i>Anadolu Bank</i>	<i>Turkey</i>
<i>Demirbank</i>	<i>Turkey</i>
<i>Bayındırbank</i>	<i>Turkey</i>
<i>Deutsche Bank</i>	<i>Turkey</i>
<i>ABN Ambro Bank</i>	<i>Lebanon</i>
<i>Yapı Merkezi Sisli Plaza</i>	<i>Turkey</i>
<i>Toyota Plaza</i>	<i>Turkey</i>
<i>Mosenka Plaza</i>	<i>Russia</i>
<i>Mosenka Capital Plaza</i>	<i>Russia</i>
<i>Golden Plaza</i>	<i>Lebanon</i>
<i>Toyota Plaza</i>	<i>Turkey</i>
<i>Toyota Plaza</i>	<i>Turkey</i>
<i>Crown Plaza</i>	<i>Turkey</i>
<i>Inco Construction Park Plaza</i>	<i>Turkey</i>
<i>Alpha Haus, Oberhausen</i>	<i>Germany</i>
<i>Bertelsmann Haus , München</i>	<i>Germany</i>
<i>Bürogebaude Karl Scharnagel, München</i>	<i>Germany</i>
<i>Fiba Trade Center</i>	<i>Romania</i>
<i>Samsung Bussines Center</i>	<i>Russia</i>
<i>TEB Research Center</i>	<i>Turkey</i>
<i>Turkish Trade Center Moskova</i>	<i>Russia</i>
<i>Murmansk Trade Center</i>	<i>Russia</i>
<i>FIBA Trade Center</i>	<i>Romania</i>
<i>Gorizont Trade Center R.on Don</i>	<i>Russia</i>
<i>Millenium Trade Center R.on Don</i>	<i>Russia</i>
<i>Torgoviy Dom Trade Center</i>	<i>Russia</i>
<i>IBM</i>	<i>Turkey</i>
<i>Sinan Dayioğlu Building</i>	<i>Turkey</i>
<i>DHL Building</i>	<i>Turkey</i>
<i>Emlak Bank Bilkent Buildings</i>	<i>Turkey</i>
<i>MEDEXPRESS Head Ofşce St. Petersburg</i>	<i>Russia</i>
<i>ENSA Foreign Trade</i>	<i>Turkey</i>
<i>Eldor Electronics</i>	<i>Turkey</i>

OTELLER VE RESTORANLAR / HOTELS & RESTAURANTS

<i>Salamis Bay Hotel</i>	<i>Cyprus</i>
<i>Novotel</i>	<i>Israel</i>
<i>Hotel A.D. 120 Hod</i>	<i>Israel</i>
<i>Marriott Hotels</i>	<i>United Kingdom</i>
<i>Hotel Lilia</i>	<i>Bulgaria</i>
<i>Dostluk Hotel</i>	<i>Ozbekistan</i>
<i>Özbekistan Hotel</i>	<i>Ozbekistan</i>
<i>Yat Limani Hotel</i>	<i>Turkey</i>
<i>Bilkent Ankara Hotel</i>	<i>Turkey</i>
<i>Hotel Lilia Zlatini Piyasatsi</i>	<i>Bulgaria</i>
<i>Mövenpick Hotel, Frankfurt</i>	<i>Germany</i>
<i>Hotel Blue Heaven, Frankfurt</i>	<i>Germany</i>
<i>Solymos Hotel</i>	<i>Turkey</i>
<i>Mabice Hotel</i>	<i>Turkey</i>
<i>Washington Resort Hotel</i>	<i>Turkey</i>
<i>Defne Dream Hotel</i>	<i>Turkey</i>
<i>Adora Golf Resort Hotel</i>	<i>Turkey</i>
<i>Glorya Golf Hotel</i>	<i>Turkey</i>
<i>Ma Beach Hotel</i>	<i>Turkey</i>
<i>Altis Golf Hotel</i>	<i>Turkey</i>
<i>Phaselis Princess Hotel</i>	<i>Turkey</i>
<i>İkbal Hotel</i>	<i>Turkey</i>
<i>Sila Hotel</i>	<i>Turkey</i>
<i>Grıda Hotel</i>	<i>Turkey</i>
<i>Gloria Golf Otel</i>	<i>Turkey</i>
<i>Rixos Hotel</i>	<i>Turkey</i>
<i>Palmira Hotel</i>	<i>Turkey</i>
<i>MNG Hotel</i>	<i>Turkey</i>
<i>Green House Hotel</i>	<i>Turkey</i>
<i>Sea Garden Hotel</i>	<i>Turkey</i>
<i>Grand Yazici Hotel</i>	<i>Turkey</i>
<i>Luba Beach Hotel</i>	<i>Turkey</i>
<i>Altinyunus Hotel</i>	<i>Turkey</i>
<i>Marcon Hotel</i>	<i>Turkey</i>
<i>Mares Hotel</i>	<i>Turkey</i>
<i>Aqua Hotel</i>	<i>Turkey</i>
<i>Salamis Bay Hotel</i>	<i>Cpyrus</i>
<i>Brevffy House Hotel</i>	<i>Ireland</i>
<i>Aberdeen Arms Hotel</i>	<i>Ireland</i>
<i>Four Seasons Hotel</i>	<i>Ireland</i>
<i>Radisson Hotel</i>	<i>Ireland</i>
<i>Green Isle Hotel</i>	<i>Ireland</i>
<i>White's Hotel</i>	<i>Ireland</i>
<i>Ritz Carlton Hotel</i>	<i>Turkey</i>
<i>Sea Garden Holiday Village</i>	<i>Turkey</i>
<i>Club Erdoğan Holiday Village</i>	<i>Turkey</i>
<i>Miletos Golftas Holiday Village</i>	<i>Turkey</i>
<i>Ephesus Golftas Holiday Village</i>	<i>Turkey</i>
<i>Limak Merit Arcadia Holiday Village</i>	<i>Turkey</i>
<i>Magic Life Holiday Village</i>	<i>Turkey</i>
<i>Magic Life Holiday Village</i>	<i>Turkey</i>
<i>Lykia World Holiday Village</i>	<i>Turkey</i>
<i>Limak Merit Limra Holiday Village</i>	<i>Turkey</i>
<i>Marko Polo Holiday Village</i>	<i>Turkey</i>
<i>Champion Holiday Village</i>	<i>Turkey</i>
<i>Coralia Club</i>	<i>Turkey</i>
<i>Club Med La Palmyre</i>	<i>France</i>
<i>AB Club Belezia</i>	<i>Turkey</i>
<i>Havana Beach Club</i>	<i>Turkey</i>
<i>Moda Sea Club</i>	<i>Turkey</i>
<i>Orange Garden Apart</i>	<i>Turkey</i>
<i>Magic Life/Belpark</i>	<i>Turkey</i>
<i>Deniz Kızı Royal Casino</i>	<i>Cpyrus</i>
<i>Silence Park Resort</i>	<i>Turkey</i>
<i>Varan Restaurant</i>	<i>Turkey</i>
<i>Arsipel Restaurant</i>	<i>Turkey</i>
<i>Hillside Restaurant / Cafe</i>	<i>Turkey</i>

OTELLER VE RESTORANLAR / HOTELS & RESTAURANTS

<i>Tanyeli Delux Hotel / Manavgat</i>	<i>Turkey</i>
<i>Kaya Hotel</i>	<i>Turkey</i>
<i>İkbal Termal Hotel</i>	<i>Turkey</i>
<i>Hotel 2000 Gümbet</i>	<i>Turkey</i>
<i>Grand Yazıcı Hotel</i>	<i>Turkey</i>
<i>Celikpalas Hotel</i>	<i>Turkey</i>
<i>Boyugüzel Hotel</i>	<i>Turkey</i>
<i>Asur Apart Hotel</i>	<i>Turkey</i>
<i>Atapark Hotel</i>	<i>Turkey</i>
<i>Korumar Hotel</i>	<i>Turkey</i>
<i>Julian Apart Hotel</i>	<i>Turkey</i>
<i>Cinar Apart Hotel</i>	<i>Turkey</i>
<i>Balıktasi Hotel</i>	<i>Turkey</i>
<i>Ibis Hotel, Hannover</i>	<i>Turkey</i>
<i>Inter City Hotels</i>	<i>Turkey</i>
<i>Steigenberger Hotels</i>	<i>Turkey</i>
<i>Adana Hilton Hotel</i>	<i>Turkey</i>
<i>Hotel Panoramic, Timmendorf</i>	<i>Germany</i>
<i>Proton Hotel</i>	<i>Russia</i>
<i>Gelios Hotel St. Petersburg</i>	<i>Russia</i>
<i>Hotel Oktyabrskaya St. Petersburg</i>	<i>Russia</i>
<i>Hotel Pulkovskaya St. Petersburg</i>	<i>Russia</i>
<i>Hotel Ritz CARLTON/Moscow</i>	<i>Russia</i>
<i>Tripoli Exhibition Hotel</i>	<i>Lebanon</i>
<i>Novotel</i>	<i>Lebanon</i>
<i>Laklouk Mountain Hotel</i>	<i>Lebanon</i>
<i>California Hotel Bahrain</i>	<i>Bahrain</i>
<i>Euro Hotel</i>	<i>Azerbaijan</i>
<i>Burger King</i>	<i>Turkey</i>
<i>Ram Store Mc Donalds</i>	<i>Russia</i>
<i>Cherkizovskaya Mc Donalds</i>	<i>Russia</i>
<i>Starbucks</i>	<i>Turkey</i>
<i>Golf Country</i>	<i>Turkey</i>
<i>Lübecker, Lübeck</i>	<i>Germany</i>
<i>Haagen Dazs</i>	<i>Spain</i>
<i>Accapulco</i>	<i>Cpyrus</i>
<i>Queen Mary II Transatlantic</i>	<i>France</i>
<i>Schlotzky Delly</i>	<i>Turkey</i>
<i>Royal Caribbean</i>	<i>USA</i>
<i>Mövenpick Frankfurt</i>	<i>Germany</i>
<i>M&M Disco</i>	<i>Turkey</i>

Urban Life Paketleme Bilgileri *Urban Life packaging details*

Ebat Size	Kalınlık(mm) Thickness	Kutu adet Box pcs	Kutu m ² Box m ²	Palet kutu Pallet box	Palet m ² Pallet m ²
M 90x90 Panel Decor	9	1	0.81	30	43.20
M 60x60 Porselen yer-porcelain floor	9	4	1.44	30	43.20
M 60x60 Porselen yer-porcelain floor rectified	9	4	1.44	30	43.20
M 60x60 Porselen yer-porcelain floor Ararat	11	4	1.44	30	43.20
M 60x60 Porselen yer-porcelain floor rec. Ararat	11	4	1.44		
M 60x60 Porselen yer-porcelain floor Jerusalem					
M 60x60 Panel decor	9	2	0.54	26	36.92
M 45x45 Porselen yer-porcelain floor	9	7	1.42	26	36.92
M 45x45 Porselen yer-porcelain floor rectified	9	7	1.42	26	36.92
M 45x45 Porselen yer-porcelain floor Ararat	11	7	1.42	26	36.92
M 45x45 Porselen yer-porcelain floor rec. Ararat	11	7	1.42		
M 45x45 Porselen yer-porcelain floor Dakota					
M 45x45 Basamak-step tread	9	6	1.22	40	43.20
M 30x60 Porselen yer-porcelain floor	9	6	1.08	44	47.52
M 30x60 Porselen yer-porcelain floor rectified	9	6	1.08	40	43.20
M 30x60 Porselen yer-porcelain floor Ararat	11	6	1.08	44	47.52
M 30x60 Porselen yer-porcelain floor rec. Ararat	11	6	1.08		
M 30x60 Porselen yer-porcelain floor rec. Arcadia					
M 30x60 Porselen yer-porcelain floor Dakota				72	72.00
M 30x30 Yer karosu-floor tile	7	11	1.00	72	72.00
M 30x30 Porselen yer-porcelain floor	7	11	1.00	54	54.00
M 30x30 Porselen yer rek.-porcelain floor rectified	7	11	1.00		
M 30x30 Basamak-step tread	7	11	1.00		
M 30x30 Profilli basamak-profiled step tread	7	4	0.36		
M 30x30 Profilli köşe-profiled corner	7	2	0.18		
M 30x30 Decor Jerusalem					
M 30x30 Panel Decor		9	0.81	81	81.00
M 20x20 Porselen yer-porcelain floor	6	25	1.00	56	56.00
M 15x60 Porselen yer-porcelain floor	9	11	1.00		
M 15x30 Porselen yer-porcelain floor	8	11	0.50	68	68.00
M 15x15 porselen yer-porcelain floor	8	44	1.00		
M 8.5x60 Süpürgelik-Bullnose Skirting		----	----		
M 8.5x45 Süpürgelik-Bullnose Skirting		48	1.84		
M 8x30 Süpürgelik-Bullnose skirting		24	0.58		
M 7x30 Süpürgelik-Bullnose Skirting		30	0.63		

Urban Life Ebat Bilgileri *Urban Life Size Information*

Ebat Size	Gerçek boyut Actual size mm	Rektifiye edilmiş boyut Rectified size
M 60x60	597x597	592x592
M 30x60 Duvar-Wall	295x595	290x590
M 30x60 Yer-Floor	295x595	292x592
M 15x60	145x595	142x592
M 45x45	443.8x443.8	442x442
M 40x40	397x397	
33x33	330x330	
M 30x30	297x297	292x292
M 30x42	298x418	
M 25x40	248x398	242x392
M 25x33	248x328	
M 20x30	198x298	
M 20x20 Duvar-Wall	198x198	
M 20x20 Yer-Floor	197x197	
M 15x15 Yer-Floor	147x147	
M 10x30	97x297	
M 10x10	97x97	
M 5x10	47x97	
M 5x5	47x47	
M 2.5x5	23x47	
M 2.5x2.5	23x23	

